

**GUERRA**

107N

**GUERRA**



Tel.: +34 986 58 20 00  
Fax: +34 986 58 22 91



Avda. Benigno Sánchez s/n  
36590 VILA DE CRUCES  
(Pontevedra) - Spain



[www.iguerra.com](http://www.iguerra.com)  
[info@iguerra.com](mailto:info@iguerra.com)



Capture to contact



In favour of improving our products, INDUSTRIAS GUERRA reserves the right to make whatever modifications it considers appropriate without prior notice.  
ED. 07/2019



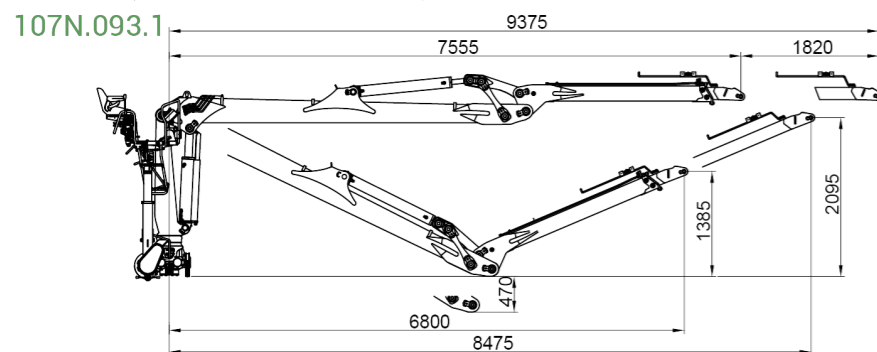
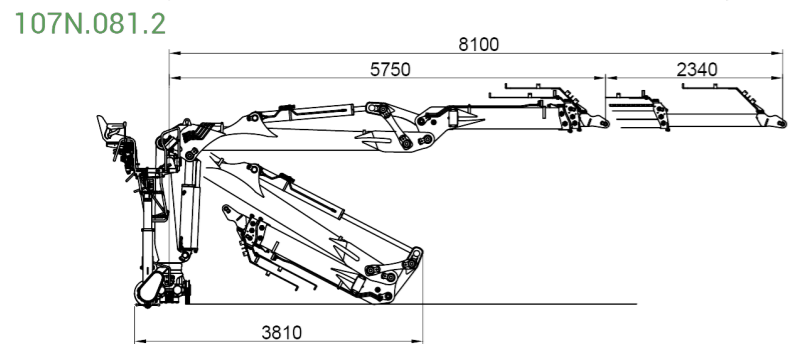
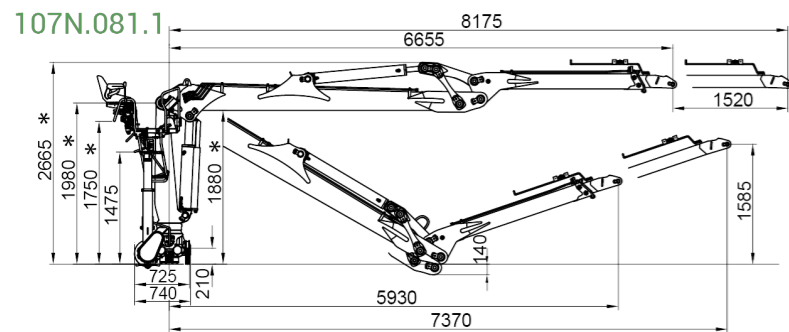
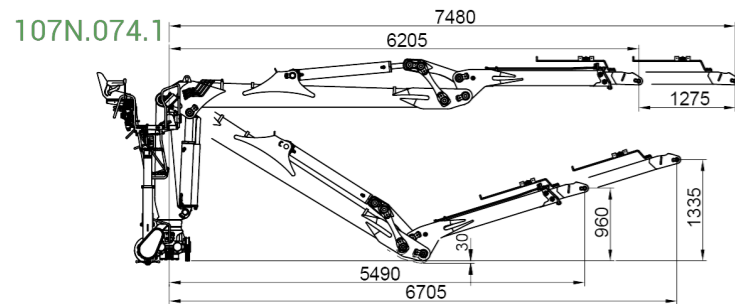
Hydraulic cranes

**FORESTRY**

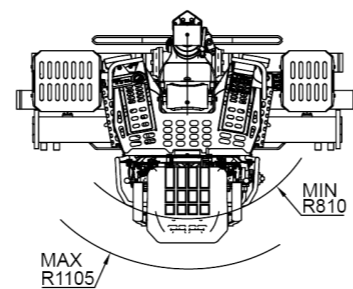
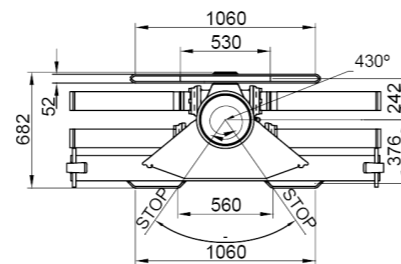
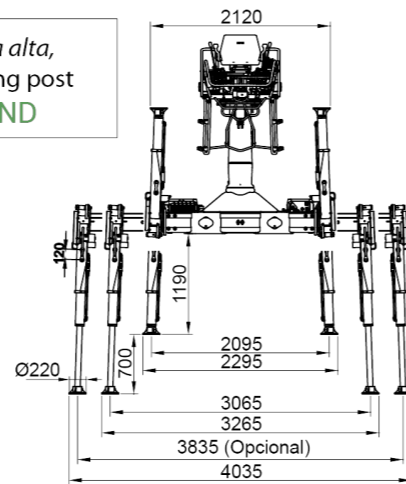
# 107N



## DIMENSIONS



\* *opcional columna alta, optional, higher king post +150 mm 107ND*



## TECHNICAL DATA

		107N.074.1	107N.081.1	107N.081.2	107N.093.1	
	MAXIMUM LIFTING CAPACITY	[kNm]	108.4	105.1	108.8	97.4
	MAXIMUM HYDRAULIC OUTREACH	[m]	7.4	8.1	8.1	9.3
	GROSS SLEWING TORQUE	[kNm]	26.4	26.4	26.4	26.4
	SLEWING ANGLE	[°]	430	430	430	430
	MAXIMUM WORKING PRESSURE	[bar]	230	230	230	230
	MAXIMUM OIL FLOW	[l/min]	80	80	80	80
	MASS OF STANDARD CRANE	[Kg]	2190	2220	2280	2280

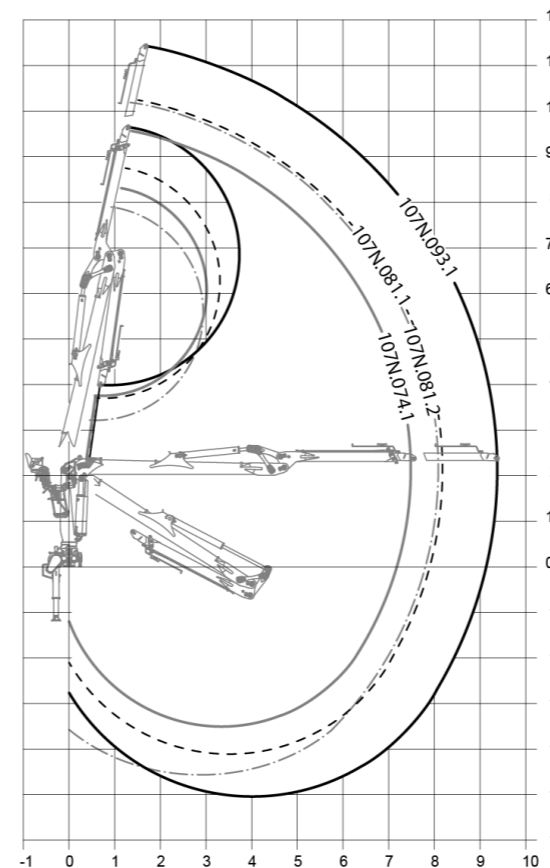
## DATA

- ✓ Built according "EN 12999" rule H1-B4 class
- ✓ 4 slewing cylinders and double rack
- ✓ Wheel-rack slewing system, in oil bath, with oscillant roller bearings
- ✓ New control position, ergonomic, easy of access
- ✓ Hydraulically extensible and manually gyratory outriggers
- ✓ Pre- installation of 4- function point accesory control.

## + OPTIONAL

- ✓ Control valve with fixed or variable flow.
- ✓ Hydraulically giratory outriggers.
- ✓ More resistant outriggers (guided).
- ✓ Heat exchanger.
- ✓ Set of headlights.

## POSITIONS DIAGRAM



## LOAD DIAGRAM

