

GUERRA

150VC

GUERRA



Tel.: +34 986 58 20 00
Fax: +34 986 58 22 91



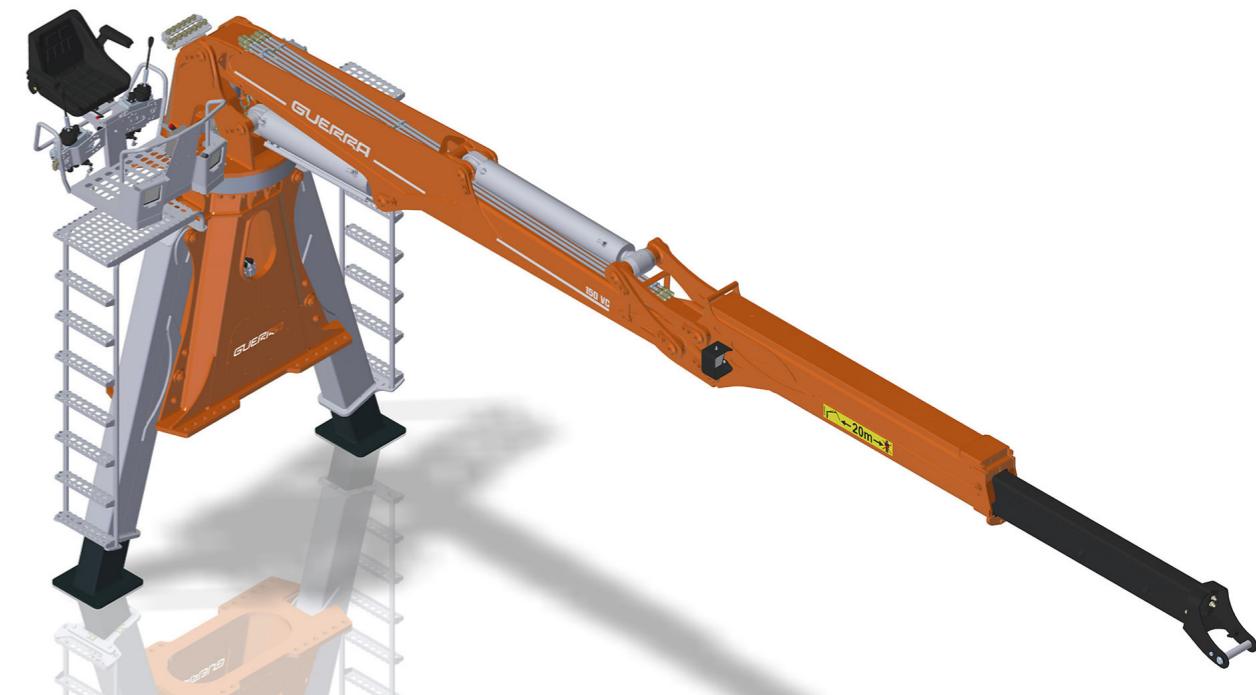
Avda. Benigno Sánchez s/n
36590 VILA DE CRUCES
(Pontevedra) - Spain



www.iguerra.com
info@iguerra.com



Capture to contact



In favour of improving our products, INDUSTRIAS GUERRA reserves the right to make whatever modifications it considers appropriate without prior notice.
ED. 03/2019



Hydraulic cranes

FORESTRY

150VC

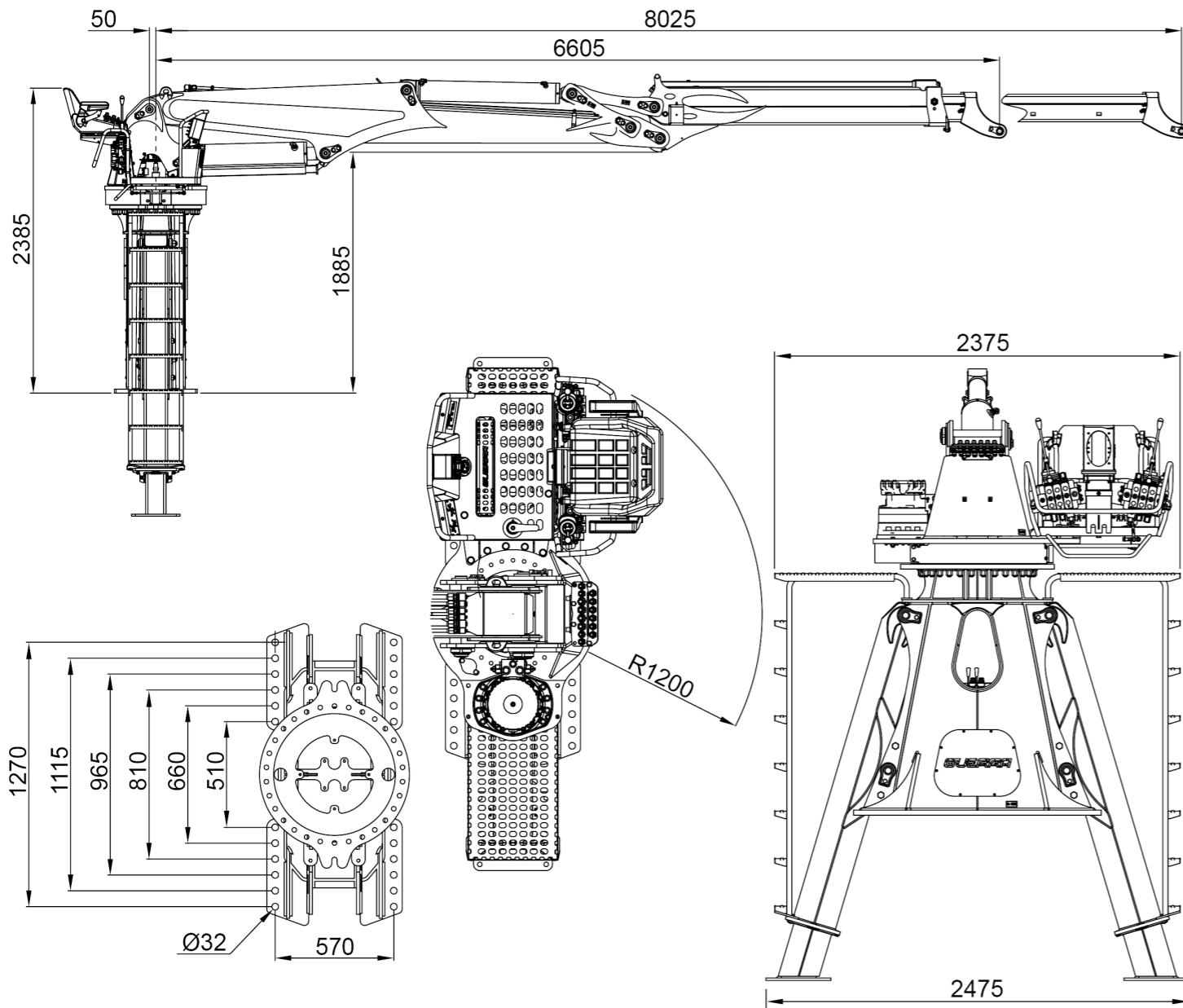


150VC.080.1

TECHNICAL DATA

| | | | |
|--|----------------------------|---------|----------|
| | MAXIMUM LIFTING CAPACITY | [kNm] | 147.1 |
| | MAXIMUM HYDRAULIC OUTREACH | [m] | 8.0 |
| | GROSS SLEWING TORQUE | [kNm] | 20.0 |
| | SLEWING ANGLE | [°] | 360 |
| | MAXIMUM WORKING PRESSURE | [bar] | 210 |
| | MAXIMUM OIL FLOW | [l/min] | 120/2x80 |
| | MASS OF STANDARD CRANE | [Kg] | 2885 |

DIMENSIONS



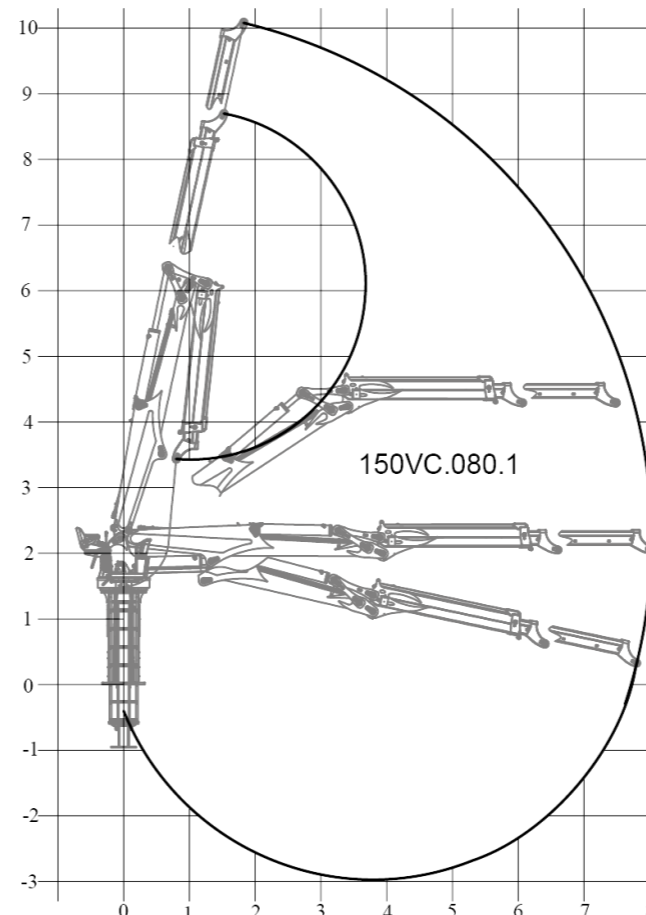
DATA

- ✓ Built according "EN 12999" rule HC1-HB4-S4 class
- ✓ Crown Wheel-bearing slewing system, with continuous slewing
- ✓ New control position, ergonomic, easy of acces
- ✓ Outriggers
- ✓ Pre- intallation of 4- function point accesory control.

+ OPTIONAL

- ✓ Control valve with fixed or variable flow
- ✓ Heat exchanger
- ✓ LED Lights

POSITIONS DIAGRAM



LOAD DIAGRAM

