

GUERRA

M 25.20A

GUERRA



Tel.: +34 986 58 20 00
Fax: +34 986 58 22 91



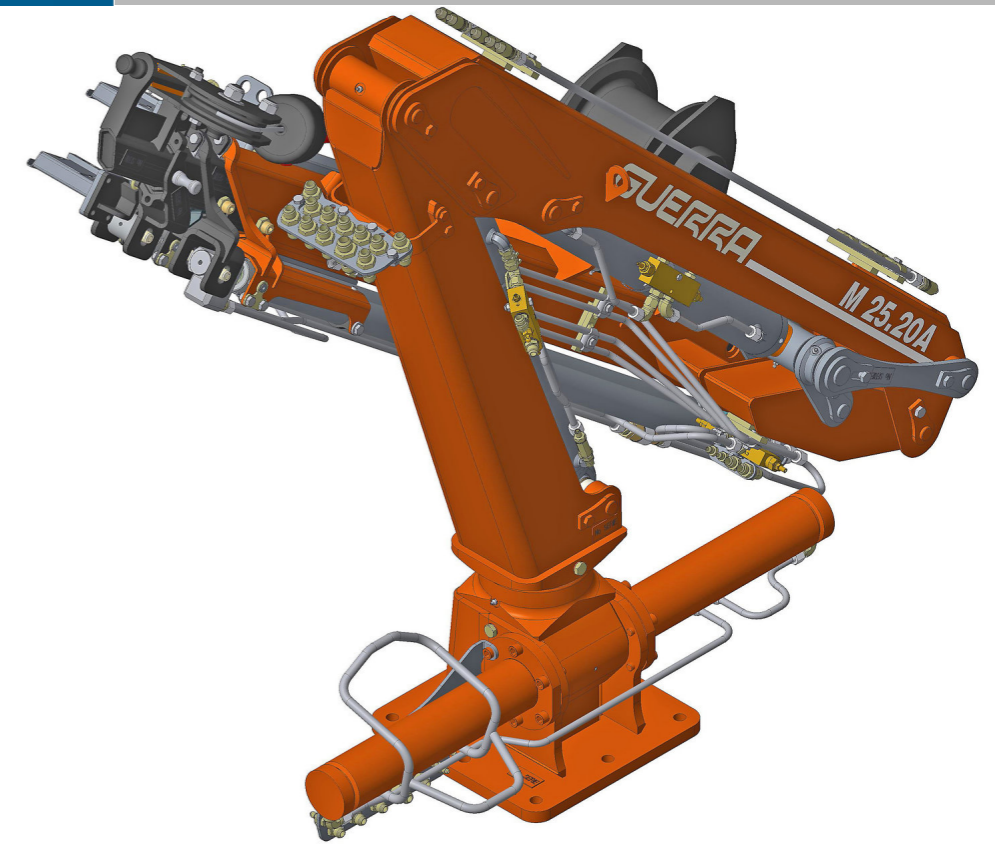
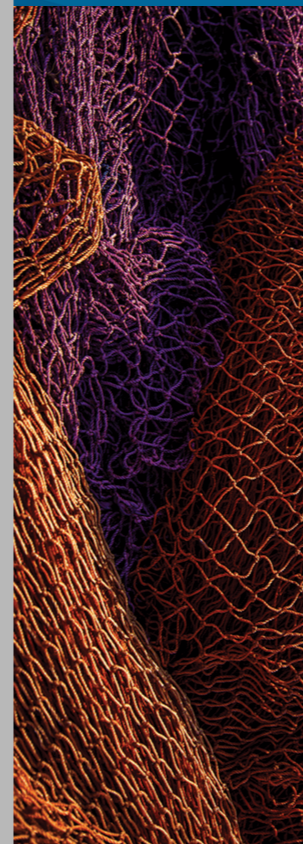
Avda. Benigno Sánchez s/n
36590 VILA DE CRUCES
(Pontevedra) - Spain



www.iguerra.com
info@iguerra.com



Capture to contact



In favour of improving our products, INDUSTRIAS GUERRA reserves the right to make whatever modifications it considers appropriate without prior notice.
ED. 10/2022



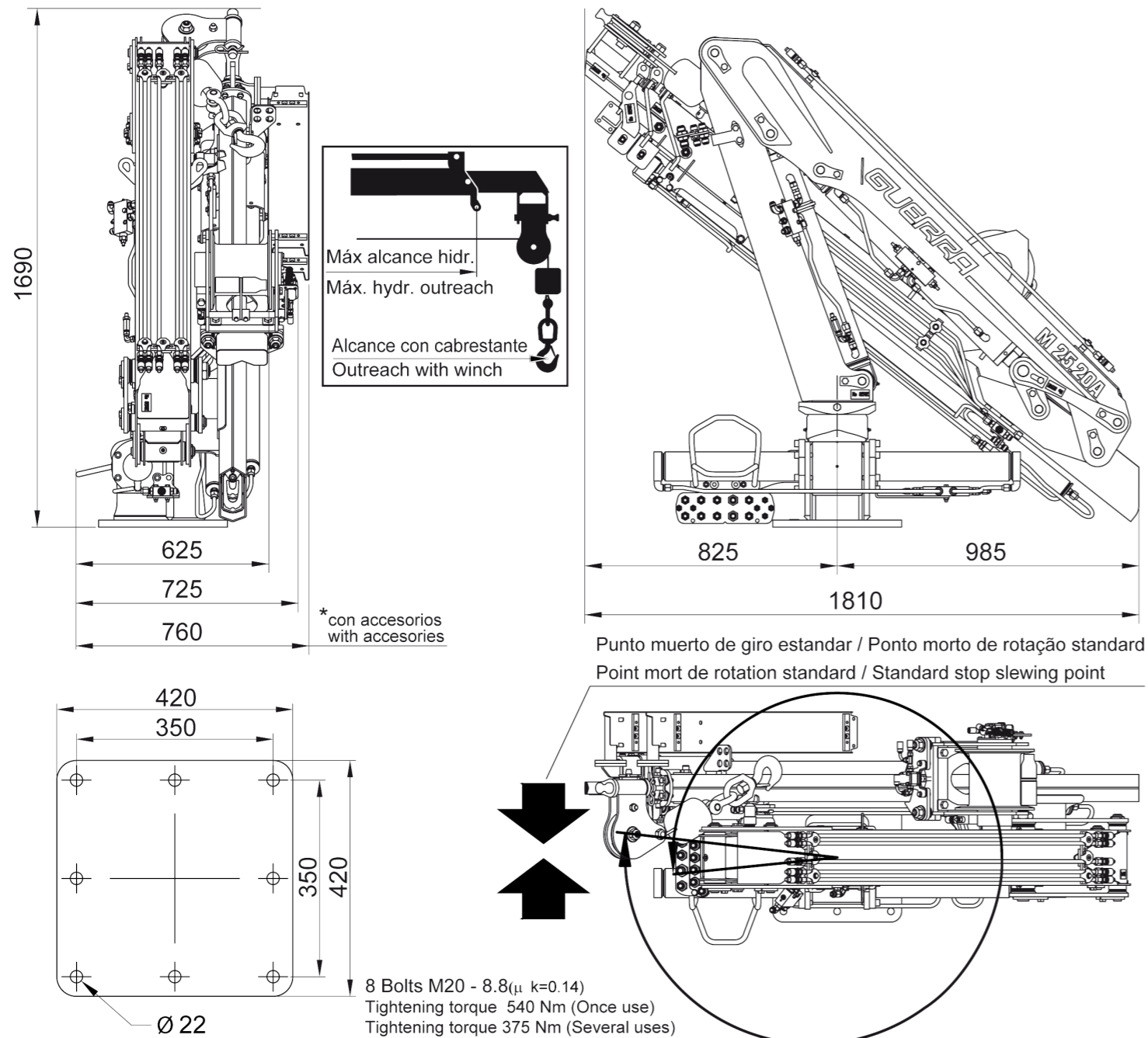
Hydraulic cranes

MARINE

M 25.20A



DIMENSIONS



TECHNICAL DATA

		M 25.20A1	M 25.20A2	
	MAXIMUM LIFTING CAPACITY	[kNm]	24.8	23.5
	MAXIMUM HYDRAULIC OUTREACH	[m]	4.8	6.3
	GROSS SLEWING TORQUE	[kNm]	4.0	4.0
	SLEWING ANGLE	[°]	360	360
	MAXIMUM WORKING PRESSURE	[bar]	220	220
	MAXIMUM OIL FLOW	[l/min]	15	15
	MASS OF STANDARD CRANE	[Kg]	634	689

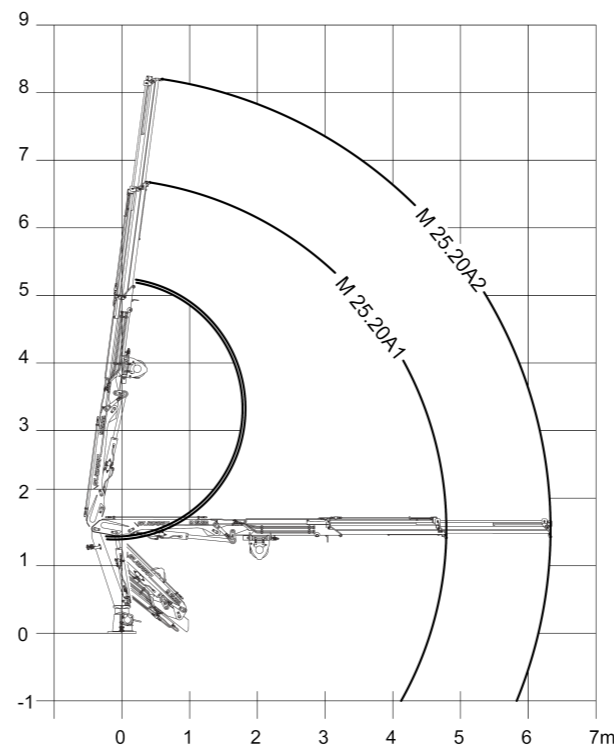
DATA

- ✓ Built according UNE-EN 13001-2 clas HC2/HD4-S2
- ✓ The structure of the crane is sandblasted and metallized
- ✓ Double coat of priming and two layers of painting
- ✓ Ni-Cr piston rods cylinders for marine environments, chrome plated piston rods on hyd
- ✓ Extensions
- ✓ Hose fittings and Pipes of hydraulic installation in stainless steel
- ✓ Wheel-rack slewing system, via cylinders, with bronze bushings
- ✓ Safety valves on the cylinders
- ✓ Emergency stop button.

+ OPTIONAL

- ✓ Hydraulic winch.
- ✓ Remote control.
- ✓ Auxiliary hydraulic intakes.
- ✓ Electric, diesel or gasoline HPU

POSITIONS DIAGRAM



LOAD DIAGRAM

