

**GUERRA**

M 400.24A

**GUERRA**



Tel.: +34 986 58 20 00  
Fax: +34 986 58 22 91



Avda. Benigno Sánchez s/n  
36590 VILA DE CRUCES  
(Pontevedra) - Spain



[www.iguerra.com](http://www.iguerra.com)  
[info@iguerra.com](mailto:info@iguerra.com)



Capture to contact



In favour of improving our products, INDUSTRIAS GUERRA reserves the right to make whatever modifications it considers appropriate without prior notice.  
ED. 06/2022



Hydraulic cranes

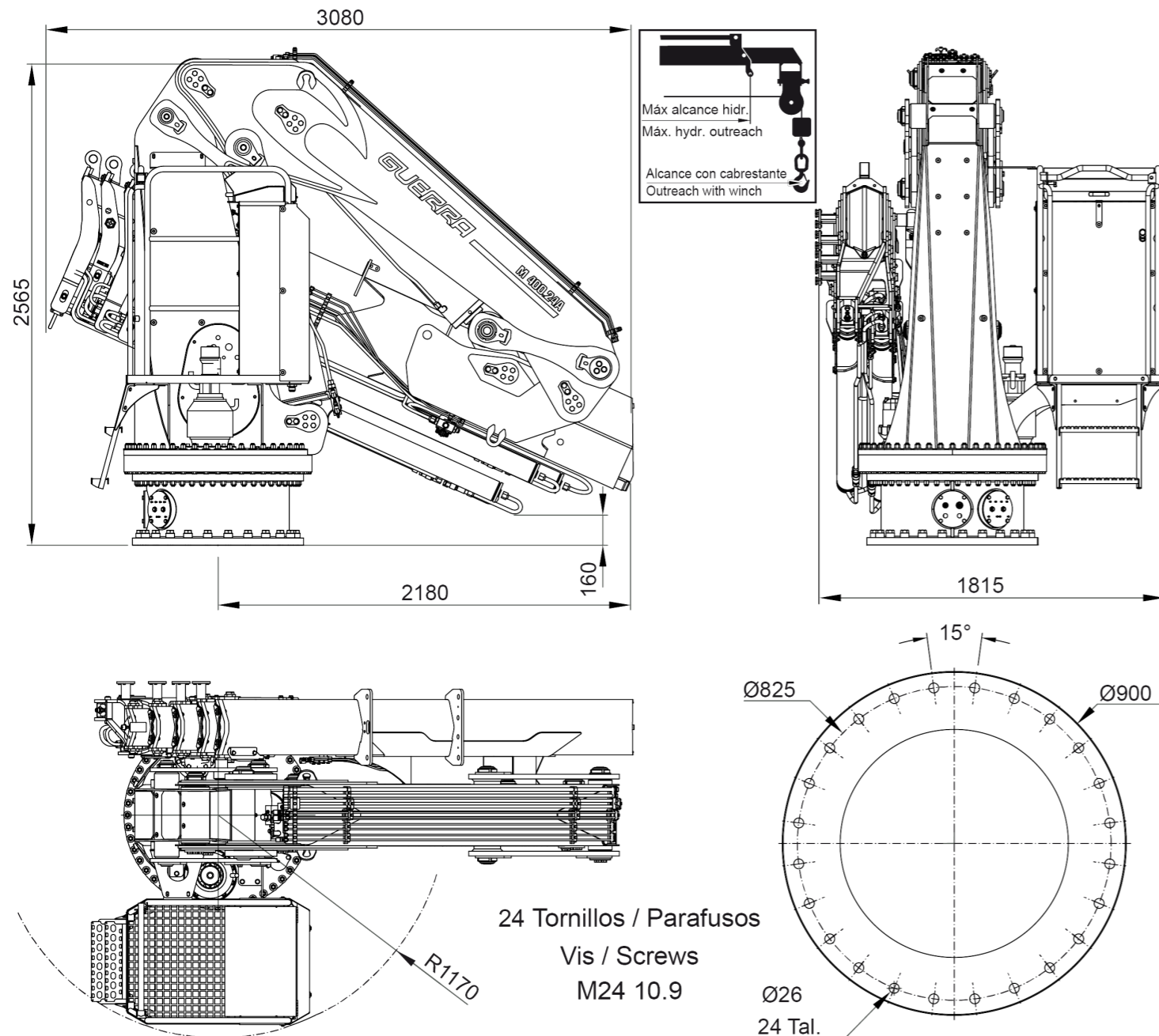
**MARINE**



# M 400.24A



## DIMENSIONS



## TECHNICAL DATA

M 400.24A2 M 400.24A3 M 400.24A4 M 400.24A5 M 400.24A6

	MAXIMUM LIFTING CAPACITY	[kNm]	378.4	369.0	360.3	351.8	343.5
	MAXIMUM HYDRAULIC OUTREACH	[m]	8.4	10.3	12.2	14.2	16.1
	GROSS SLEWING TORQUE	[kNm]	45.1	45.1	45.1	45.1	45.1
	SLEWING ANGLE	[°]	cont	cont	cont	cont	cont
	MAXIMUM WORKING PRESSURE	[bar]	280	280	280	280	280
	MAXIMUM OIL FLOW	[l/min]	70	70	70	70	70
	MASS OF STANDARD CRANE	[Kg]	3700	3955	4190	4405	4600

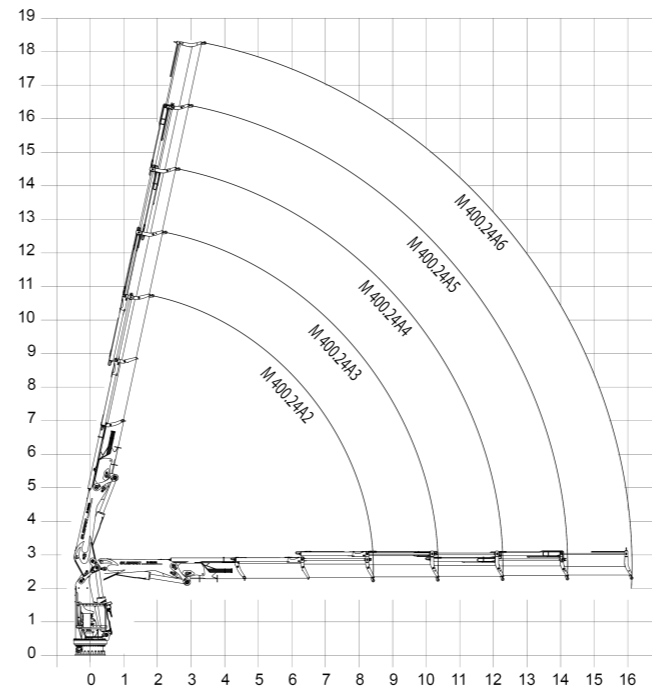
## DATA

- ✓ Built according DIN 15018 H1-B3
- ✓ The structure of the crane is grit blasted and metallized
- ✓ Double coat of priming and two layers of painting
- ✓ Special cylinders with Ni-Cr piston rods for marine environments
- ✓ Hose fittings and Pipes of hydraulic installation in stainless steel
- ✓ Hoses with rubber "type A" double coat
- ✓ Crown Wheel-bearing slewing system, actuated by motor reducers
- ✓ Safety valves on the cylinders
- ✓ Hydraulic load limiter and Emergency stop button.

## OPTIONAL

- ✓ Hydraulic winch.
- ✓ Remote control.
- ✓ Auxiliary hydraulic intakes.
- ✓ Electric, diesel or gasoline HPU

## POSITIONS DIAGRAM



## LOAD DIAGRAM

