

GUERRA

M 95.20A

GUERRA



Tel.: +34 986 58 20 00
Fax: +34 986 58 22 91



Avda. Benigno Sánchez s/n
36590 VILA DE CRUCES
(Pontevedra) - Spain



www.iguerra.com
info@iguerra.com



Capture to contact



In favour of improving our products, INDUSTRIAS GUERRA reserves the right to make whatever modifications it considers appropriate without prior notice.
ED. 03/2017



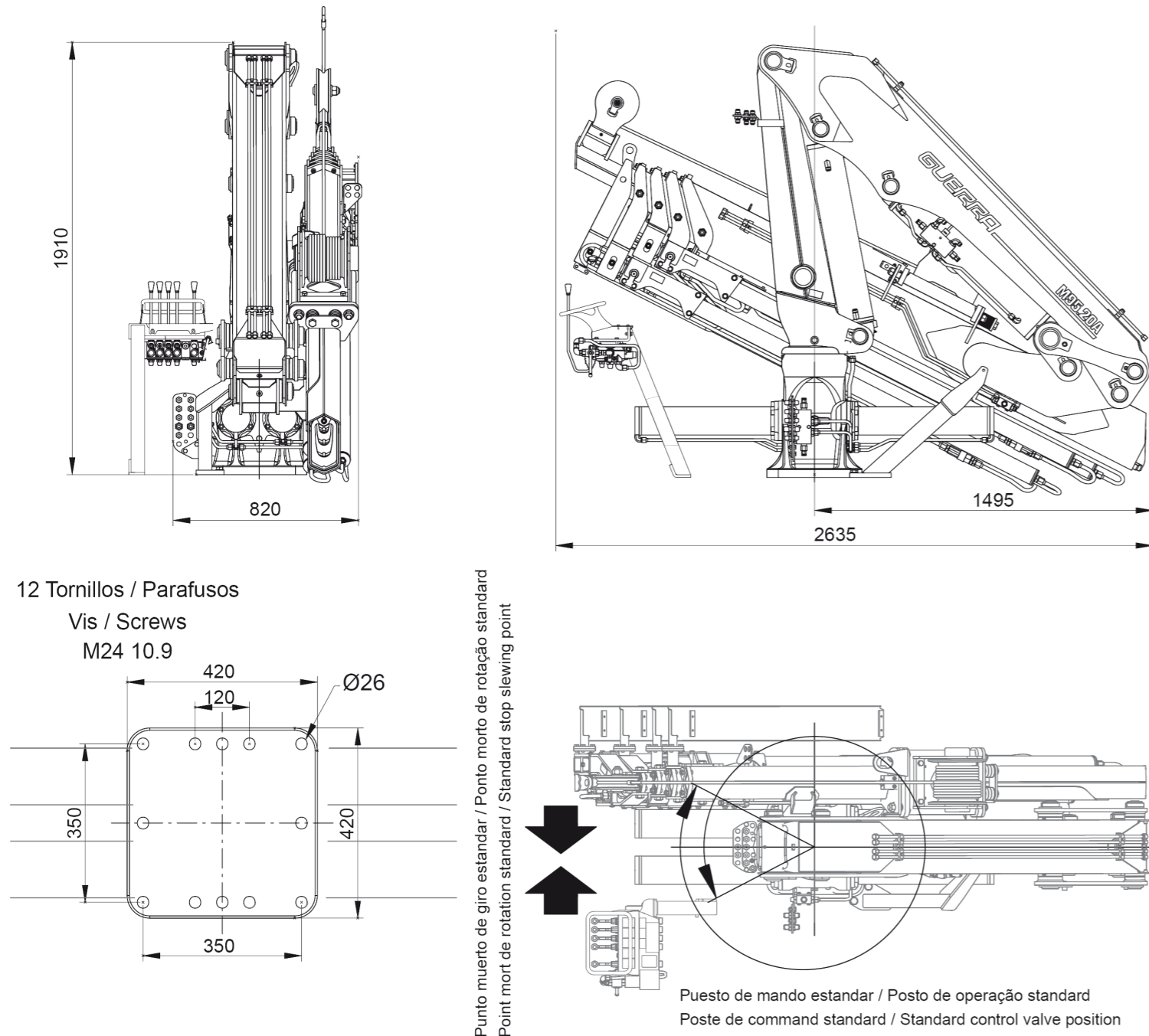
Hydraulic cranes

MARINE

M 95.20A



DIMENSIONS



TECHNICAL DATA

M 95.20A1 M 95.20A2 M 95.20A3 M 95.20A4

	MAXIMUM LIFTING CAPACITY	[kNm]	88.7	85.1	81.6	78.5
	MAXIMUM HYDRAULIC OUTREACH	[m]	6.0	7.9	9.7	11.6
	GROSS SLEWING TORQUE	[kNm]	22.4	22.4	22.4	22.4
	SLEWING ANGLE	[°]	400	400	400	400
	MAXIMUM WORKING PRESSURE	[bar]	240	240	240	240
	MAXIMUM OIL FLOW	[l/min]	35	35	35	35
	MASS OF STANDARD CRANE	[Kg]	1225	1340	1450	1550

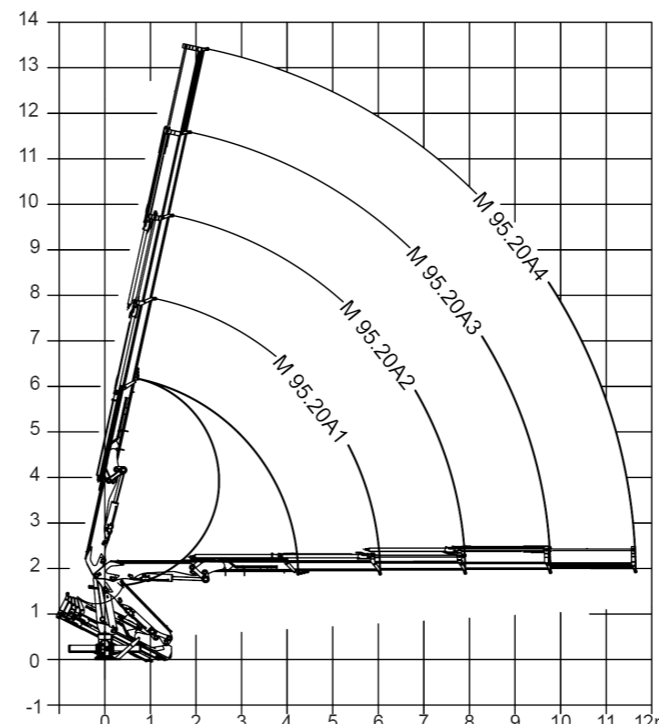
DATA

- ✓ Built according DIN 15018 H1-B3
- ✓ The structure of the crane is grit blasted and metallized
- ✓ Double coat of priming and two layers of painting
- ✓ Special cylinders with Ni-Cr piston rods for marine environments
- ✓ Hose fittings and Pipes of hydraulic installation in stainless steel
- ✓ Hoses with rubber "type A" double coat
- ✓ Wheel-rack slewing system, via cylinders, with bronze bushings
- ✓ Safety valves on the cylinders
- ✓ Hydraulic load limiter and Emergency stop button.

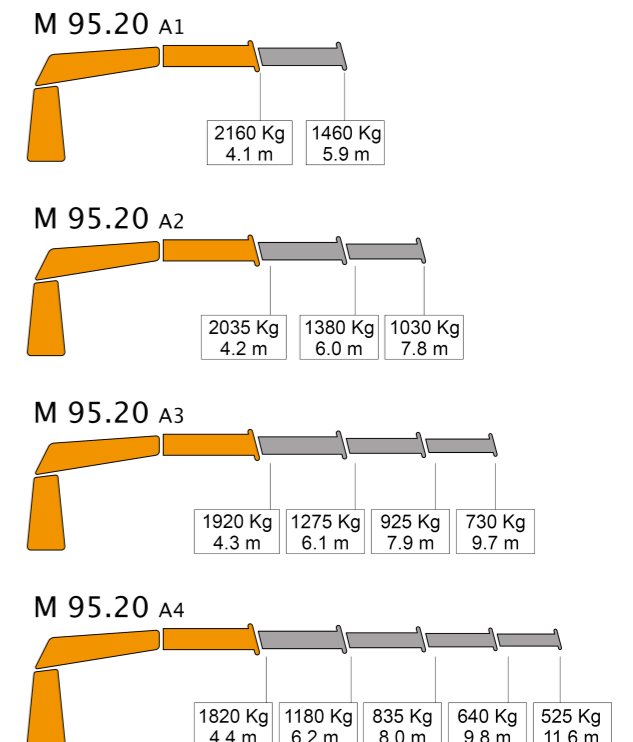
OPTIONAL

- ✓ Hydraulic winch.
- ✓ Remote control.
- ✓ Auxiliary hydraulic intakes.
- ✓ Cab.
- ✓ Electric, diesel or gasoline HPU

POSITIONS DIAGRAM



LOAD DIAGRAM



Only for use with hook - sea state 0 or harbour condition. For other uses or conditions, contact us. * When operating with winch, loads must be reduced by the weight of installed winch.