

**GUERRA**

MR 95.45A

**GUERRA**



Tel.: +34 986 58 20 00  
Fax: +34 986 58 22 91



Avda. Benigno Sánchez s/n  
36590 VILA DE CRUCES  
(Pontevedra) - Spain



[www.iguerra.com](http://www.iguerra.com)  
[info@iguerra.com](mailto:info@iguerra.com)



Capture to contact



In favour of improving our products, INDUSTRIAS GUERRA reserves the right to make whatever modifications it considers appropriate without prior notice.  
ED. 10/2018



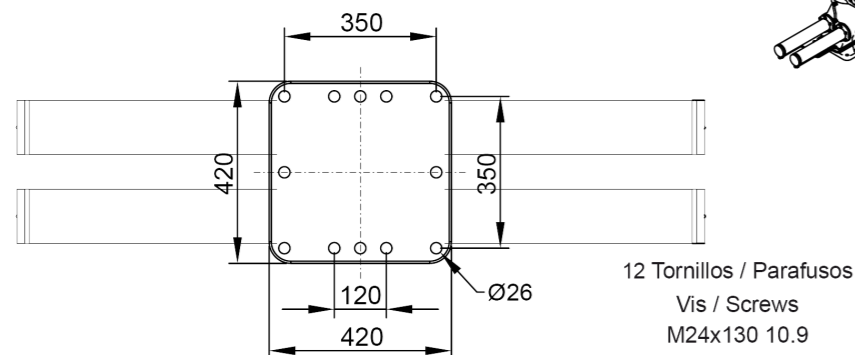
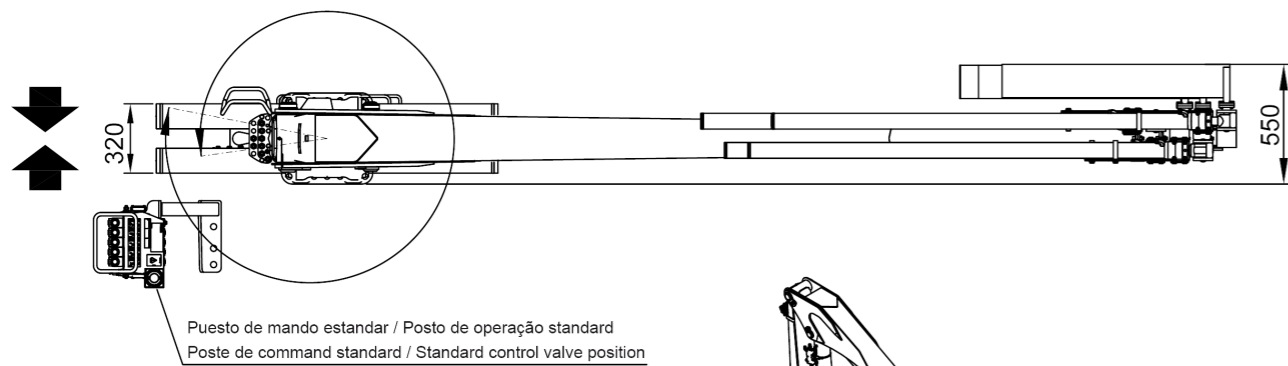
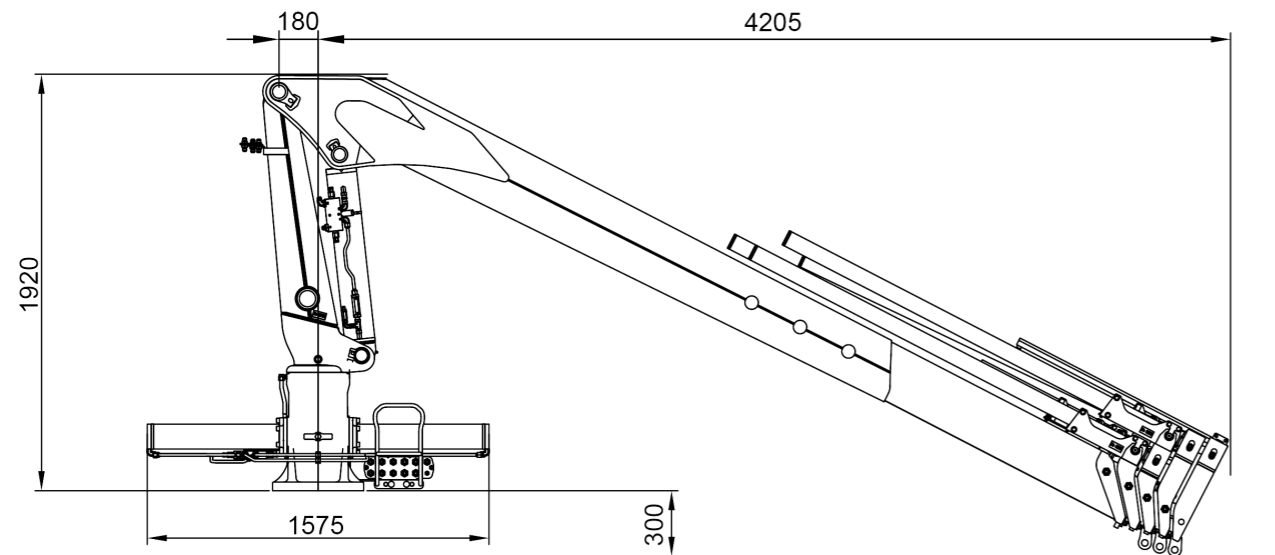
Hydraulic cranes

**MARINE**

# MR 95.45A



## DIMENSIONS



## TECHNICAL DATA

MR 95.45A1    MR 95.45A2    MR 95.45A3    MR 95.45A4

	MAXIMUM LIFTING CAPACITY	[kNm]	87.3	83.8	80.4	77.3
	MAXIMUM HYDRAULIC OUTREACH	[m]	6.0	7.9	9.7	11.6
	GROSS SLEWING TORQUE	[kNm]	22.4	22.4	22.4	22.4
	SLEWING ANGLE	[°]	400	400	400	400
	MAXIMUM WORKING PRESSURE	[bar]	240	240	240	240
	MAXIMUM OIL FLOW	[l/min]	35	35	35	35
	MASS OF STANDARD CRANE	[Kg]	1100	1210	1320	1410

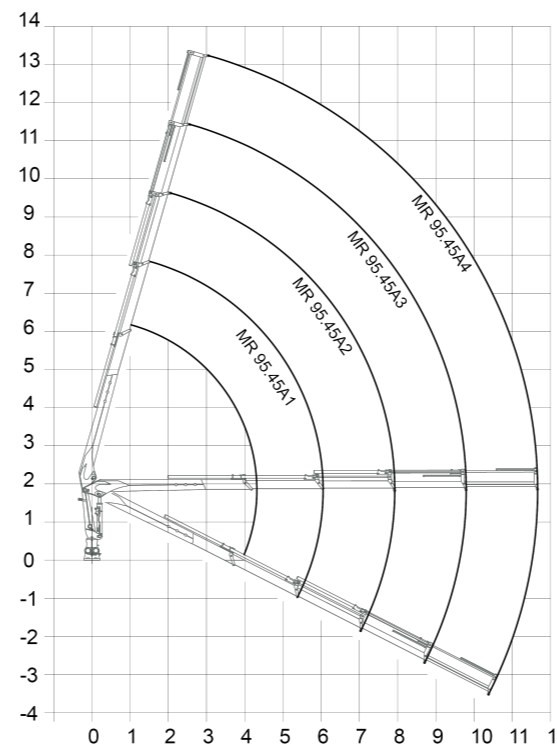
## DATA

- ✓ Built according DIN 15018 H1-B3
- ✓ The structure of the crane is grit blasted and metallized
- ✓ Double coat of priming and two layers of painting
- ✓ Special cylinders with Ni-Cr piston rods for marine environments
- ✓ Hose fittings and Pipes of hydraulic installation in stainless steel
- ✓ Hoses with rubber "type A" double coat
- ✓ Wheel-rack slewing system, via cylinders, with bronze bushings
- ✓ Safety valves on the cylinders
- ✓ Hydraulic load limiter and Emergency stop button.

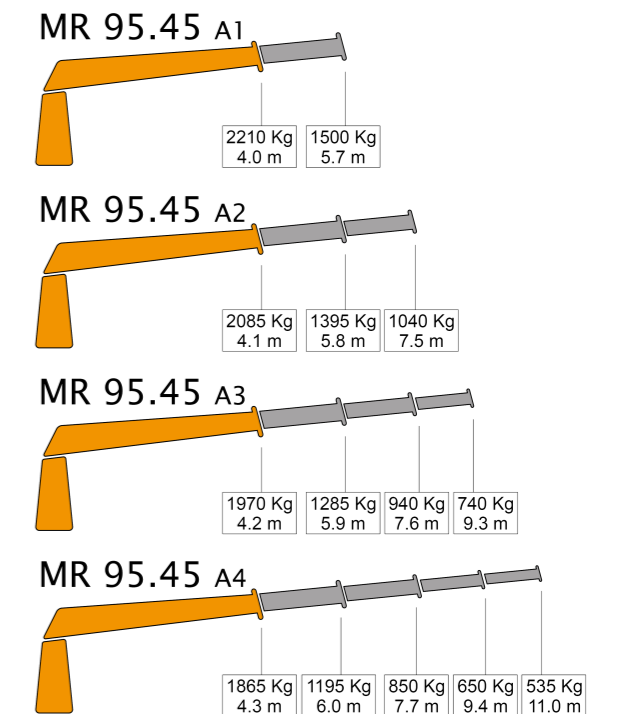
## OPTIONAL

- ✓ Hydraulic winch.
- ✓ Remote control.
- ✓ Auxiliary hydraulic intakes.
- ✓ Cab.
- ✓ Electric, diesel or gasoline HPU

## POSITIONS DIAGRAM



## LOAD DIAGRAM



Only for use with hook - sea state 0 or harbour condition. For other uses or conditions, contact us. \* When operating with winch, loads must be reduced by the weight of installed winch.