

GUERRA

MR 330.45A

GUERRA



Tel.: +34 986 58 20 00
Fax: +34 986 58 22 91



Avda. Benigno Sánchez s/n
36590 VILA DE CRUCES
(Pontevedra) - Spain



www.iguerra.com
info@iguerra.com



Capture to contact



In favour of improving our products, INDUSTRIAS GUERRA reserves the right to make whatever modifications it considers appropriate without prior notice.
ED. 09/2018



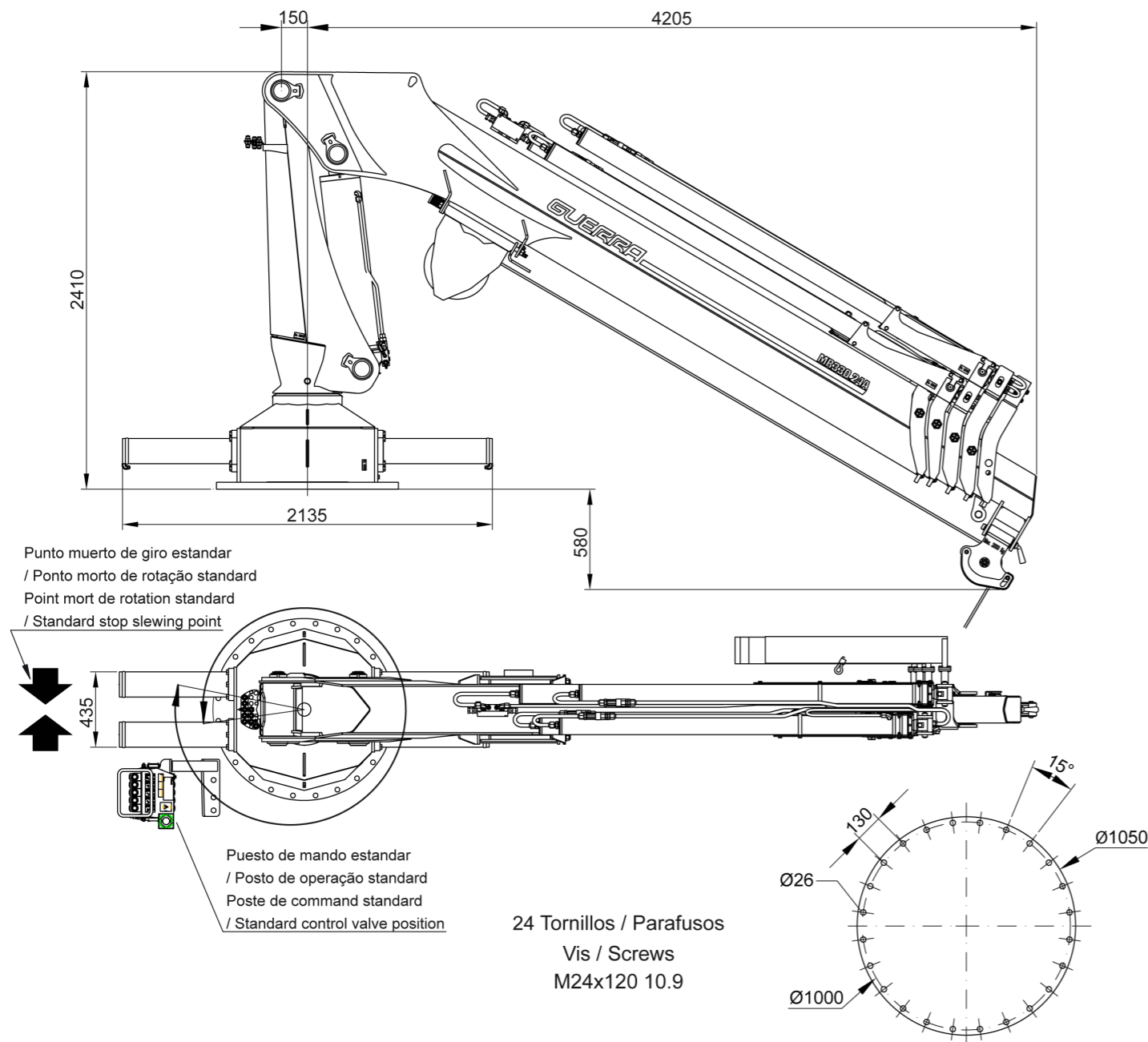
Hydraulic cranes

MARINE

MR 330.45A



DIMENSIONS



TECHNICAL DATA

MR 330.45A1 MR 330.45A2 MR 330.45A3 MR 330.45A4

	MAXIMUM LIFTING CAPACITY	[kNm]	310.9	302.0	293.4	285.7
	MAXIMUM HYDRAULIC OUTREACH	[m]	6.7	9.3	11.9	14.5
	GROSS SLEWING TORQUE	[kNm]	53.9	53.9	53.9	53.9
	SLEWING ANGLE	[°]	395	395	395	395
	MAXIMUM WORKING PRESSURE	[bar]	240	240	240	240
	MAXIMUM OIL FLOW	[l/min]	50	50	50	50
	MASS OF STANDARD CRANE	[Kg]	2305	2640	2945	3205

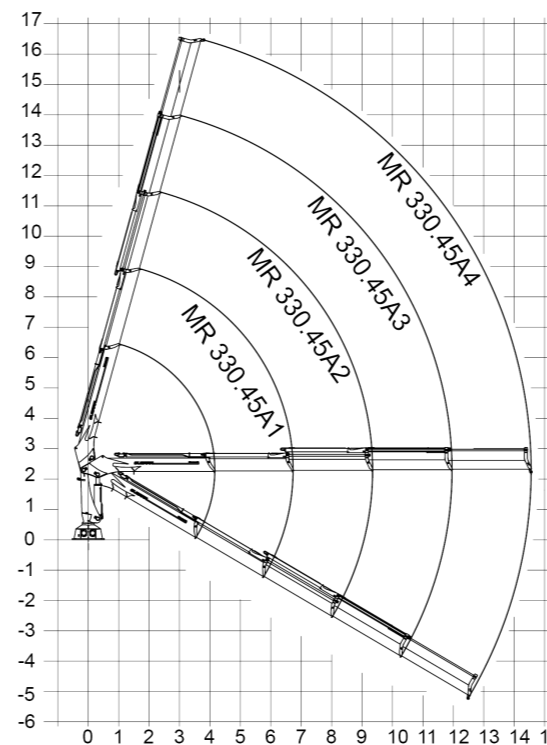
DATA

- ✓ Built according DIN 15018 H1-B3
- ✓ The structure of the crane is grit blasted and metallized
- ✓ Double coat of priming and two layers of painting
- ✓ Special cylinders with Ni-Cr piston rods for marine environments
- ✓ Hose fittings and Pipes of hydraulic installation in stainless steel
- ✓ Hoses with rubber "type A" double coat
- ✓ Wheel-rack slewing system, via cylinders, with bronze bushings
- ✓ Safety valves on the cylinders
- ✓ Hydraulic load limiter and Emergency stop button.

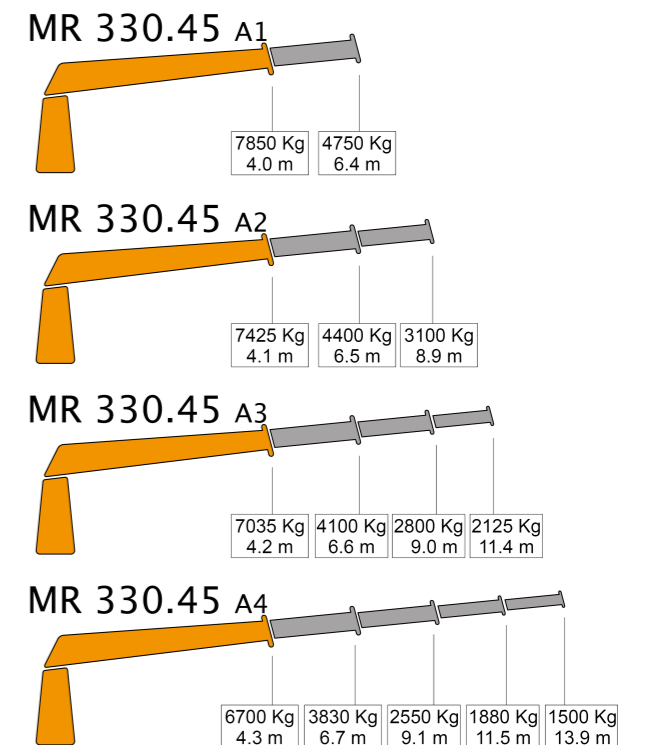
OPTIONAL

- ✓ Hydraulic winch.
- ✓ Remote control.
- ✓ Auxiliary hydraulic intakes.
- ✓ Cab.
- ✓ Electric, diesel or gasoline HPU

POSITIONS DIAGRAM



LOAD DIAGRAM



Only for use with hook - sea state 0 or harbour condition. For other uses or conditions, contact us. * When operating with winch, loads must be reduced by the weight of installed winch.