

GUERRA

M550.24A



Tel.: +34 986 58 20 00
Fax: +34 986 58 22 91



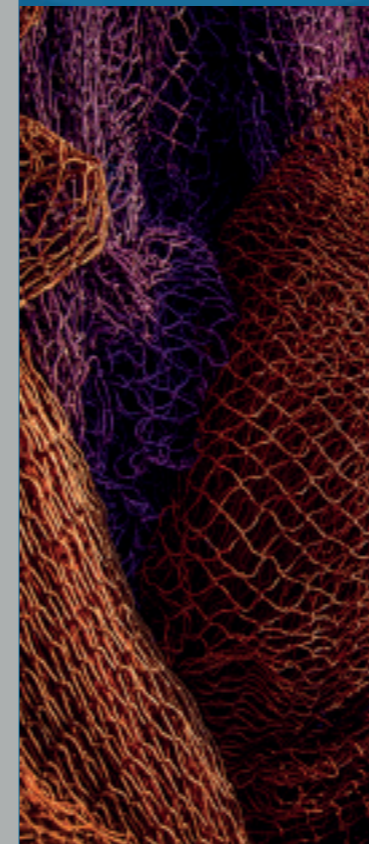
Avda. Benigno Sánchez s/n
36590 VILA DE CRUCES
(Pontevedra) - Spain



www.iguerra.com
info@iguerra.com



Capture to contact



In favour of improving our products, INDUSTRIAS GUERRA reserves the right to make whatever modifications it considers appropriate without prior notice.
ED:092023



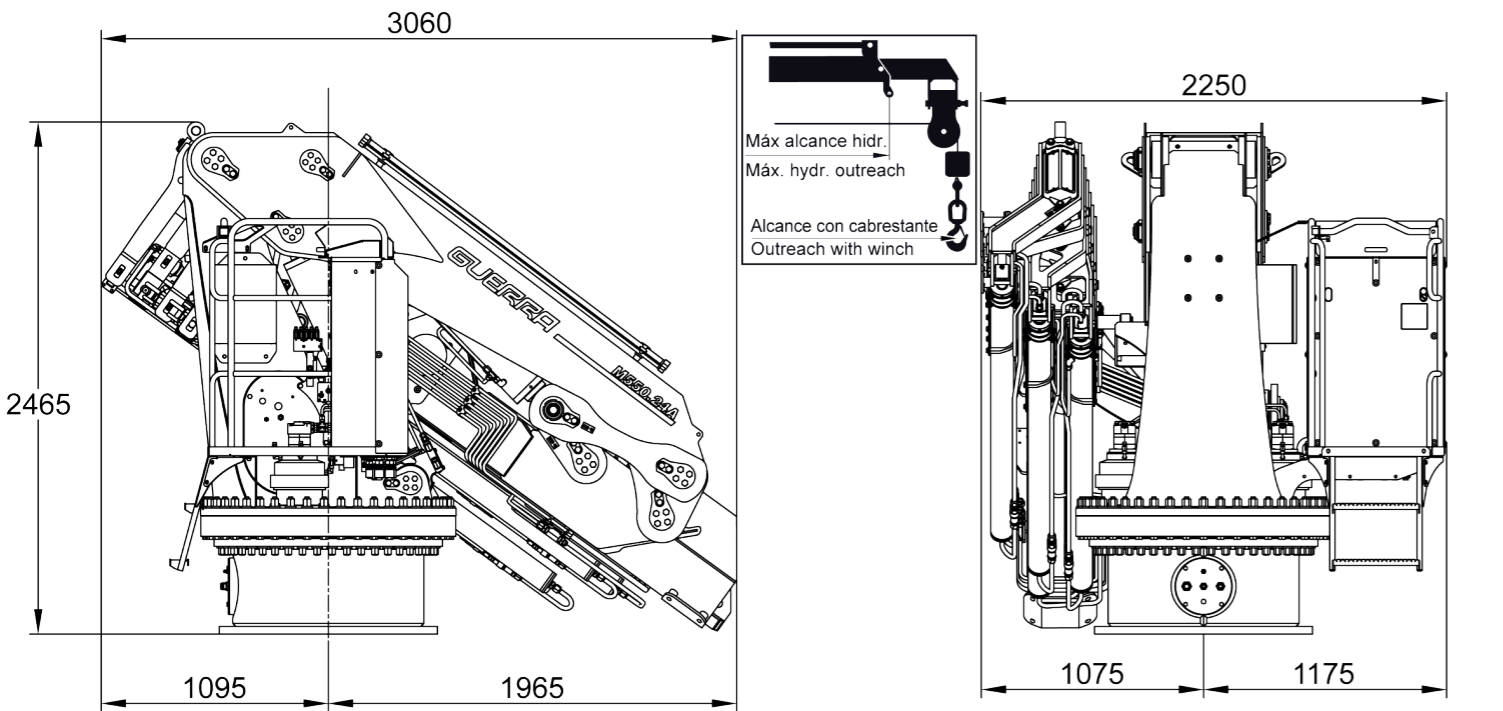
Hydraulic cranes

MARINE

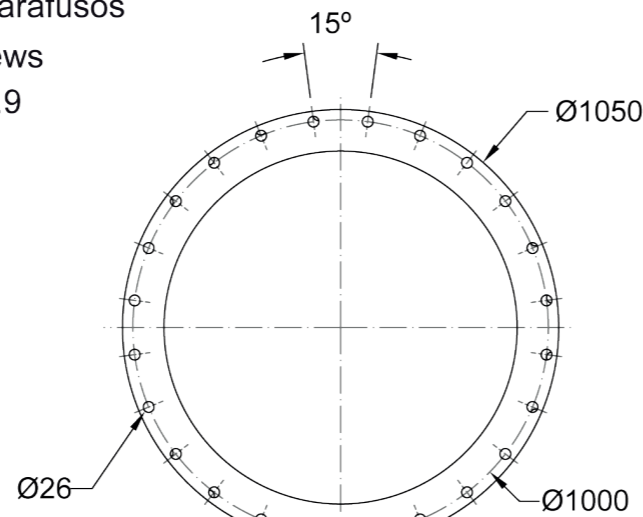
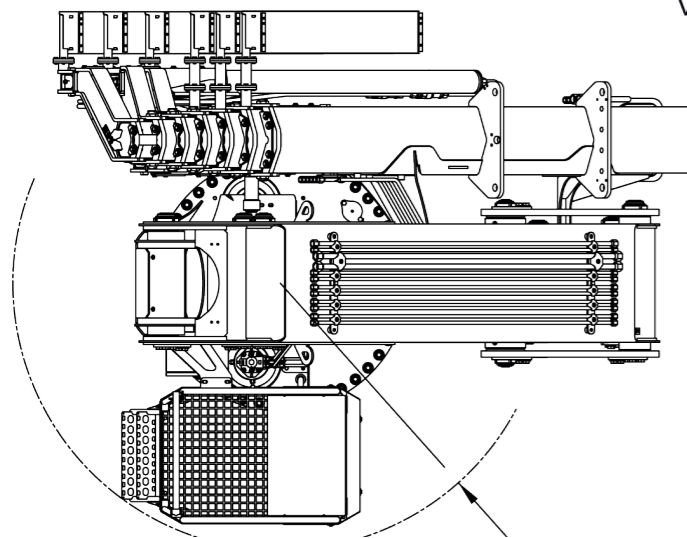
M550.24A



DIMENSIONS



24 Tornillos / Parafusos
Vis / Screws
M24 10.9



TECHNICAL DATA

M550.24A1 M550.24A2 M550.24A3 M550.24A4 M550.24A5 M550.24A6

	MAXIMUM LIFTING CAPACITY	[kNm]	525.3	515.6	506.4	497.6	498.2	481.1
	MAXIMUM HYDRAULIC OUTREACH	[m]	6.3	8.2	10.1	12.0	14.0	15.9
	GROSS SLEWING TORQUE	[kNm]	71.6	71.6	71.6	71.6	71.6	71.6
	SLEWING ANGLE	[°]	cont.	cont.	cont.	cont.	cont.	cont.
	MAXIMUM WORKING PRESSURE	[bar]	270	270	270	270	270	270
	MAXIMUM OIL FLOW	[l/min]	100	100	100	100	100	100
	MASS OF STANDARD CRANE	[Kg]	5410	5730	6020	6290	6540	6770

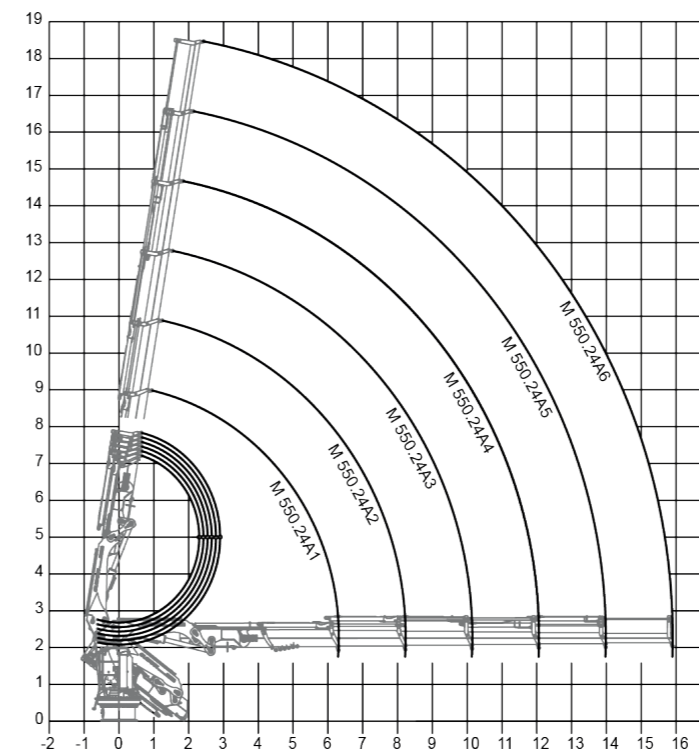
DATA

- ✓ Built according UNE-EN 13001-2 clas HC2/HD4-S2.
- ✓ The structure of the crane is sandblasted and metallized.
- ✓ Double coat of priming and two layers of painting.
- ✓ Special cylinders with Ni-Cr piston rods for marine environments.
- ✓ Hose fittings and Pipes of hydraulic installation in stainless steel.
- ✓ Hoses with rubber "type A" double coat.
- ✓ Crown Wheel-bearing slewing system, actuated by motor reducers.
- ✓ Safety valves on the cylinders.
- ✓ Emergency stop button.

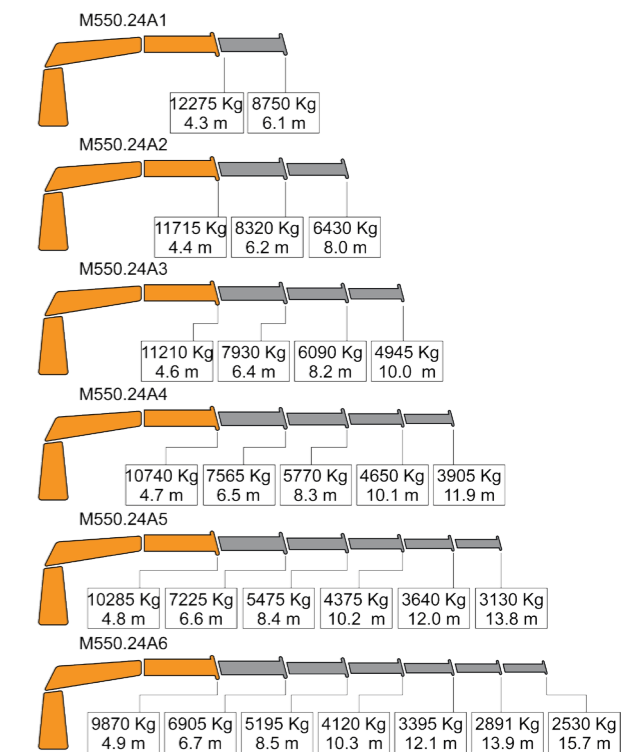
OPTIONAL

- ✓ Hydraulic winch.
- ✓ Remote control.
- ✓ Auxiliary hydraulic intakes.
- ✓ Electric, diesel or gasoline HPU.

POSITIONS DIAGRAM



LOAD DIAGRAM



Only for use with hook - sea state 0 or harbour condition. For other uses or conditions, contact us.* When operating with winch, loads must be reduced by the weight of installed winch