

GUERRA

M550L.24A



Tel.: +34 986 58 20 00
Fax: +34 986 58 22 91



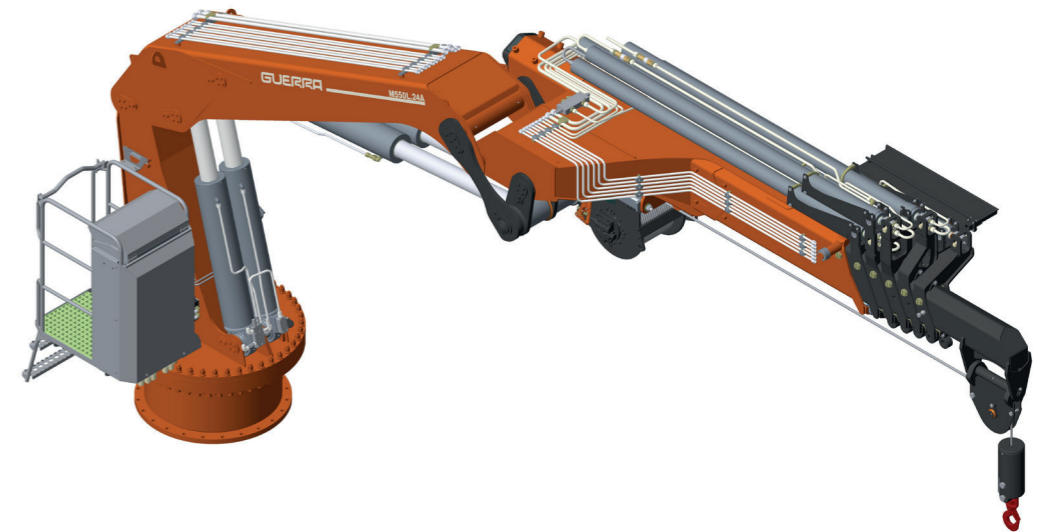
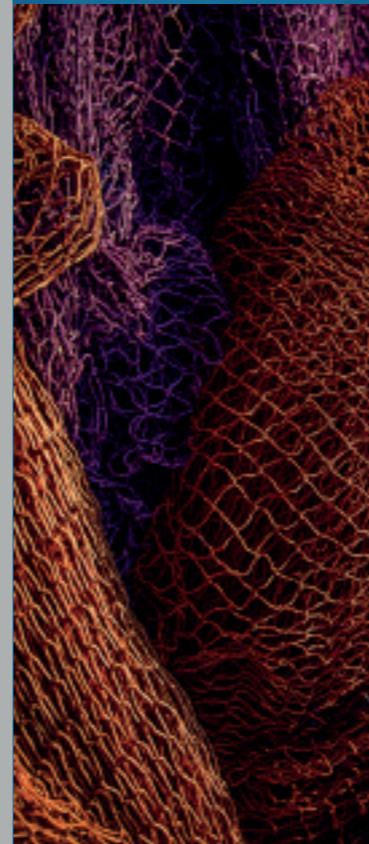
Avda. Benigno Sánchez s/n
36590 VILA DE CRUCES
(Pontevedra) - Spain



www.iguerra.com
info@iguerra.com



Capture to contact



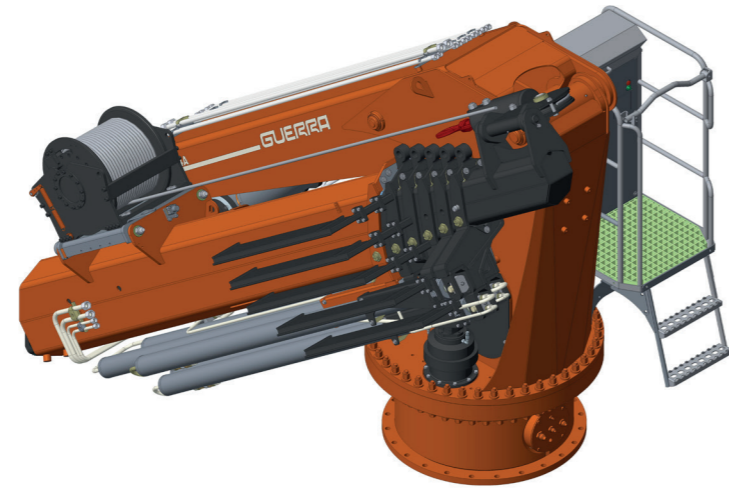
In favour of improving our products, INDUSTRIAS GUERRA reserves the right to make whatever modifications it considers appropriate without prior notice.
ED:052023



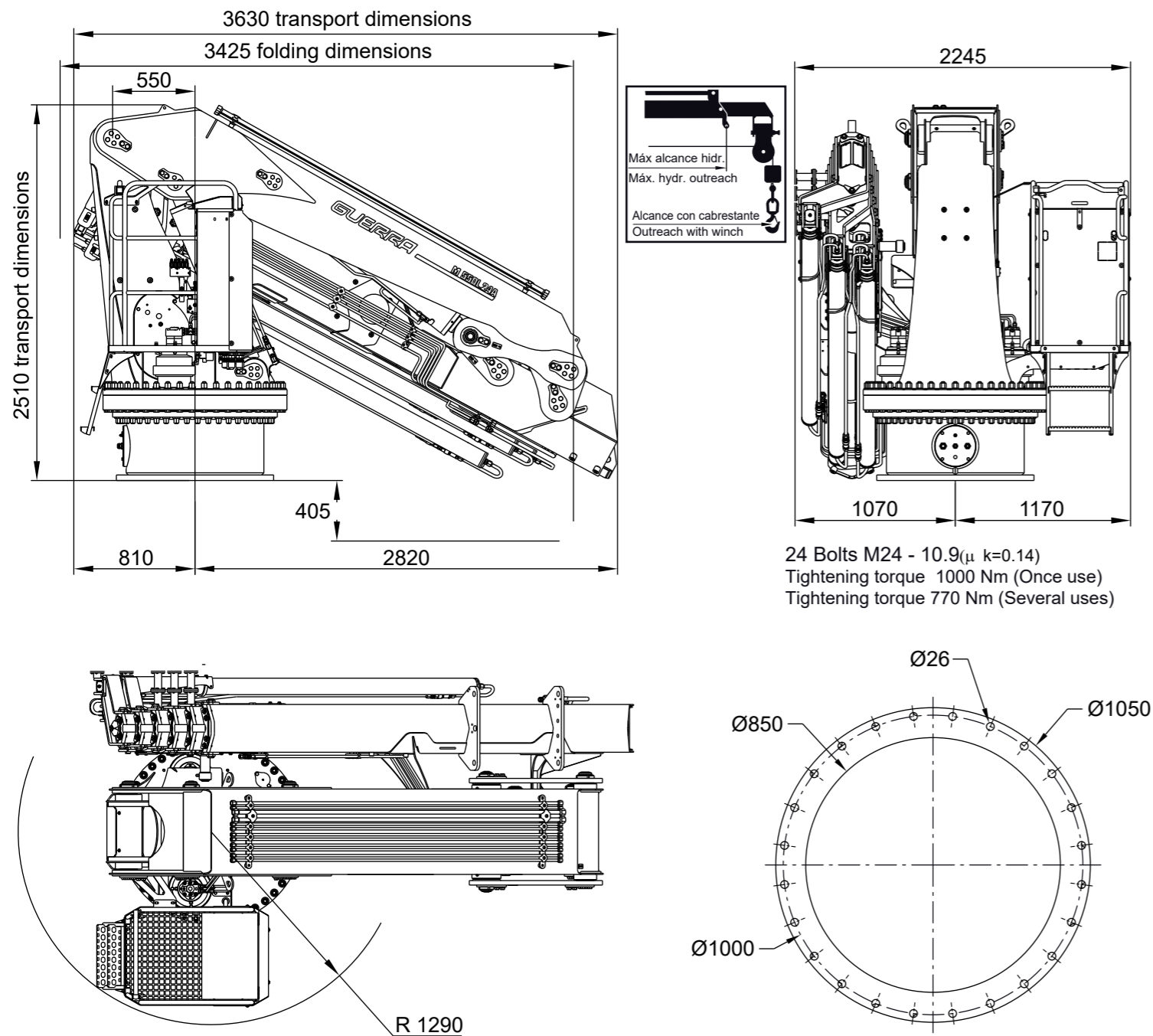
Hydraulic cranes

MARINE

M550L.24A



DIMENSIONS



TECHNICAL DATA

M550L.24A1 M550L.24A2 M550L.24A3 M550L.24A4 M550L.24A5

	MAXIMUM LIFTING CAPACITY	[kNm]	508.5	491.6	475.9	460.9	446.8
	MAXIMUM HYDRAULIC OUTREACH	[m]	8.4	11.0	13.6	16.2	18.8
	GROSS SLEWING TORQUE	[kNm]	71.5	71.5	71.5	71.5	71.5
	SLEWING ANGLE	[°]	continuous	continuous	continuous	continuous	continuous
	MAXIMUM WORKING PRESSURE	[bar]	270	270	270	270	270
	MAXIMUM OIL FLOW	[l/min]	100 /140	100 /140	100 /140	100 /140	100 /140
	MASS OF STANDARD CRANE	[Kg]	5700	6100	6465	6800	7110

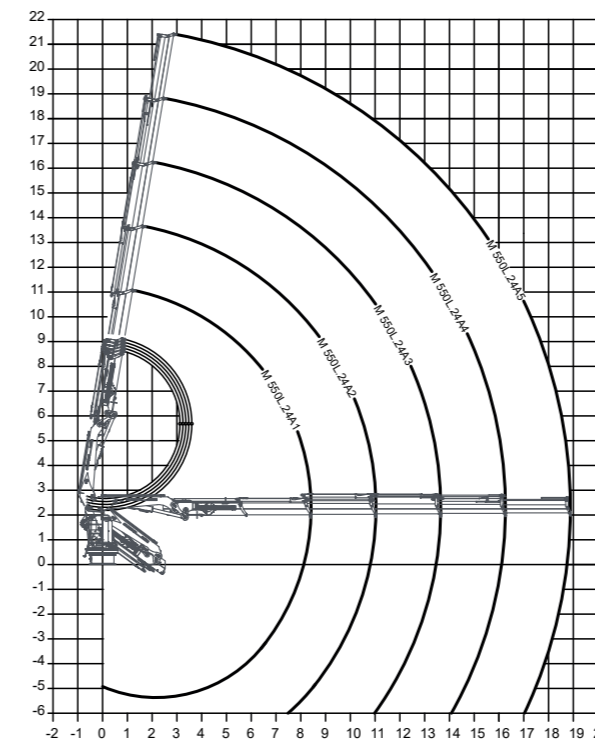
DATA

- ✓ Built according UNE-EN 13001-2 clas HC2/HD4-S2.
- ✓ The structure of the crane is sandblasted and metallized.
- ✓ Double coat of priming and two layers of painting.
- ✓ Special cylinders with Ni-Cr piston rods for marine environments.
- ✓ Hose fittings and Pipes of hydraulic installation in stainless steel.
- ✓ Hoses with rubber "type A" double coat.
- ✓ Crown Wheel-bearing slewing system, actuated by motor reducers.
- ✓ Safety valves on the cylinders.
- ✓ Emergency stop button.

OPTIONAL

- ✓ Hydraulic winch.
- ✓ Remote control.
- ✓ Auxiliary hydraulic intakes.
- ✓ Electric, diesel or gasoline HPU.

POSITIONS DIAGRAM



LOAD DIAGRAM

