

**GUERRA**

57A

**GUERRA**



Tel.: +34 986 58 20 00  
Fax: +34 986 58 22 91



Avda. Benigno Sánchez s/n  
36590 VILA DE CRUCES  
(Pontevedra) - Spain



[www.iguerra.com](http://www.iguerra.com)  
[info@iguerra.com](mailto:info@iguerra.com)



Capture to contact



In favour of improving our products, INDUSTRIAS GUERRA reserves the right to make whatever modifications it considers appropriate without prior notice.  
ED. 10/2016



Hydraulic cranes

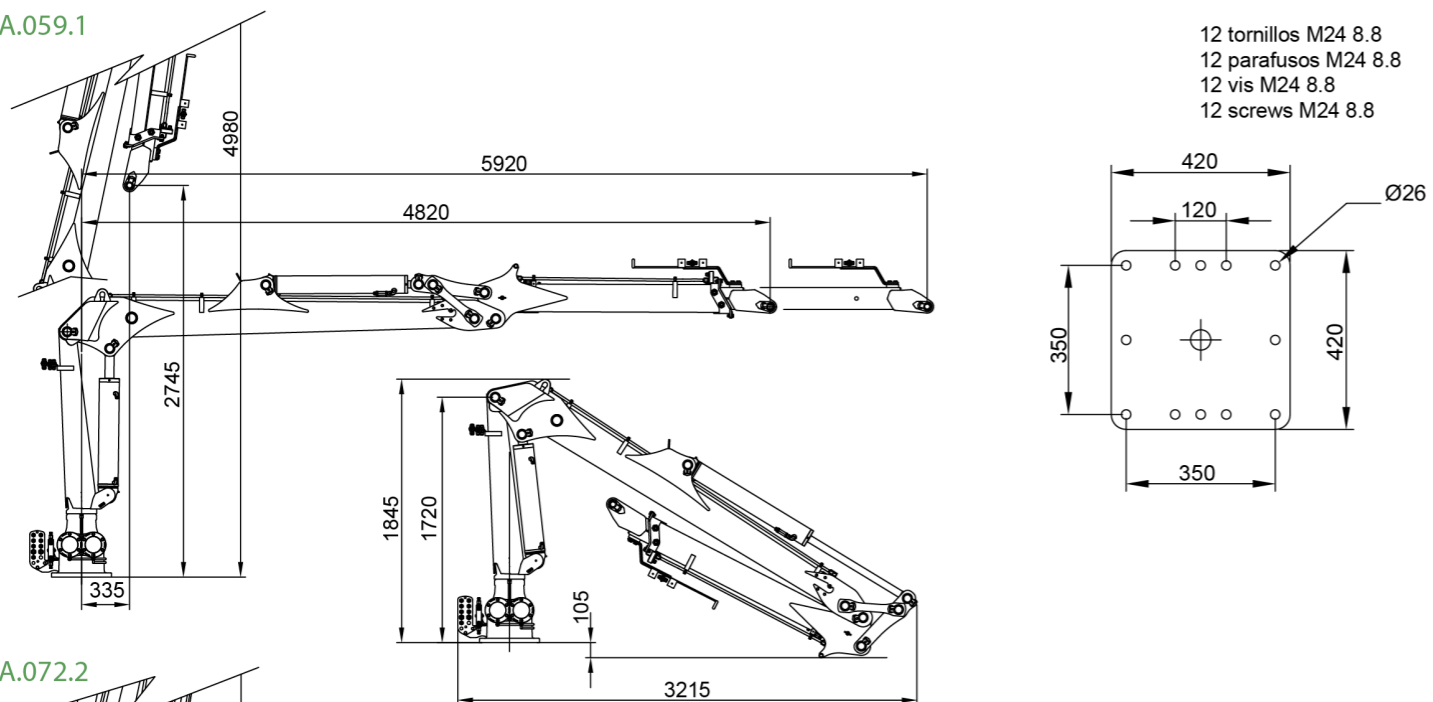
**FORESTRY**

# 57A

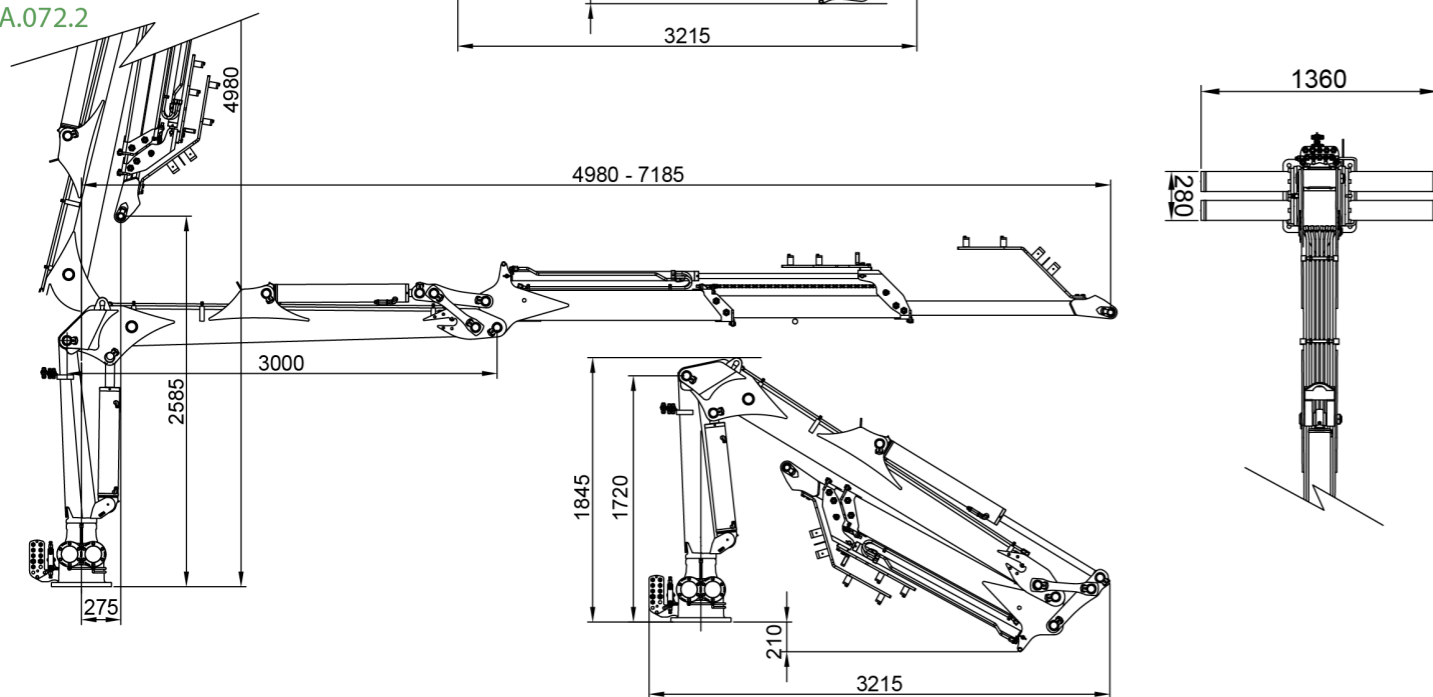


## DIMENSIONS

57A.059.1



57A.072.2



## TECHNICAL DATA

57A.059.1

57A.072.2

	MAXIMUM LIFTING CAPACITY	[kNm]	54.3	50.4
	MAXIMUM HYDRAULIC OUTREACH	[m]	5.92	7.18
	GROSS SLEWING TORQUE	[kNm]	16.28	16.28
	SLEWING ANGLE	[°]	420	420
	MAXIMUM WORKING PRESSURE	[bar]	210	210
	MAXIMUM OIL FLOW	[l/min]	70	70
	MASS OF STANDARD CRANE	[Kg]	1050	1130

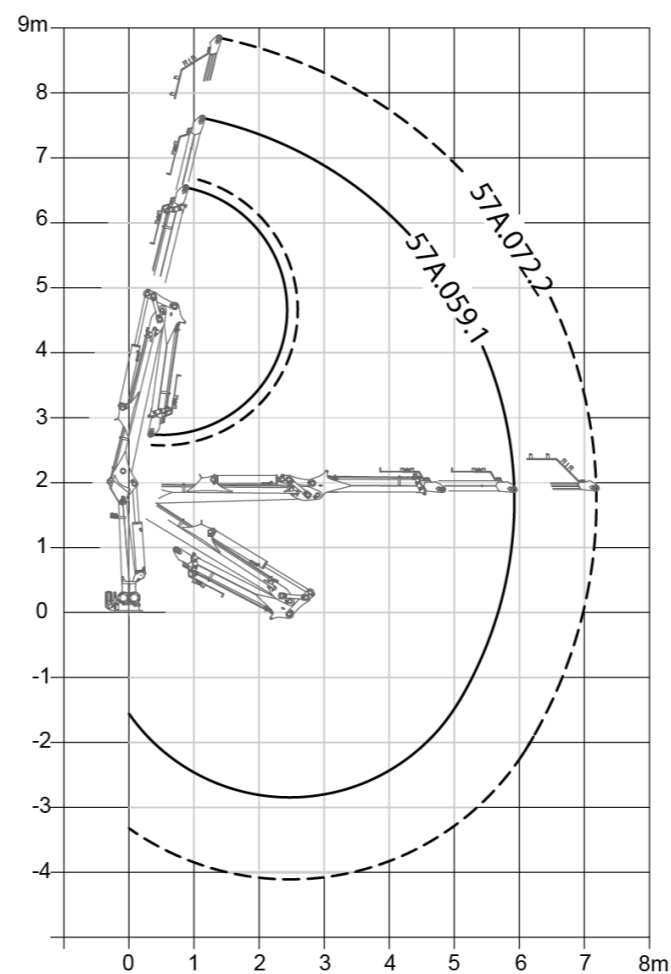
## DATA

- ✓ Built according "DIN 15018" rule H1-B4 class
- ✓ 4 slewing cylinders and double rack
- ✓ Wheel-rack slewing system, in oil bath with axial bearing
- ✓ Shotpeened structure, primer of two components and two painting layers
- ✓ Pre- installation of 4- function point accessory control.

## OPTIONAL

- ✓ Pulling winch.
- ✓ Control valve with fixed or variable flow.
- ✓ Electrical controls with joysticks.
- ✓ Heat exchanger.

## POSITIONS DIAGRAM



## LOAD DIAGRAM

