







HARVESTER HEAD
IGSA 750



- OPTIONAL
Continuous rotation for manoeuvrability.

- OPTIONAL
Color marking

- OPTIONAL
Roller protector

- OPTIONAL
Saw anti-projection guard

- OPTIONAL
780-500 cc piston traction motor

- OPTIONAL
Logger measurement equipment
12" touch screen

- OPTIONAL
Top saw

En beneficio de la mejora de nuestros productos, INDUSTRIAS GUERRA se reserva el derecho de introducir las modificaciones que considere oportunas sin previo aviso. / In favour of improving our products, INDUSTRIAS GUERRA reserves the right to make whatever modifications it considers appropriate without prior notice. / Dans le but d'améliorer nos produits, INDUSTRIAS GUERRA se réserve le droit d'introduire toute modification considérée opportune sans préavis. / Procurando unha melhora dos seus produtos as INDUSTRIAS GUERRA reservam-se o dereito de introducir, sem previo aviso, as modificacións que considerem necesarias.



GUERRA



25-35 ton

Cutting data

Diameter max. opening rollers	75 cm
Diameter max. felling	75 cm
IGSA Hydraulic Chain saw	
Power	45 kW
Chain spid	42 m/s
Chain pitch	0.4"
Max saw bar length	90 cm
Chain tensioning and automatic guide bar attachment	

Feeding system

3 pinch rollers	
Traction motor	STD (630-400) cc Opcional (780-500) cc
Maximum feeding speed	0-7 m/s

Delimiting

2 upper knives with independent cylinders and a lower knife	
Delimiting diameter	5 - 90 cm

Recommended Base machine

Type	excavator
Weight	25 - 35 T
Recommended flow	200 - 300 l/min
Pressure	280 bar

Control and measurement system

Standard	ilogger LHCS3
----------	---------------

Dimensions

Height with rotator	2235 mm
Width with rollers closed	1520 mm
Length	1410 mm
Weight without OPTIONALS	2400 Kg



The IGSA 750 is the most robust choice for working with large, difficult delimiting trees and significant diameter. It is a robust head with high pulling power.

OPTIONAL CONTINUOUS ROTATION



OPTIONAL ROLLER PROTECTOR



OPTIONAL GREATER PULLING POWER



OPTIONAL COLOR MARKING

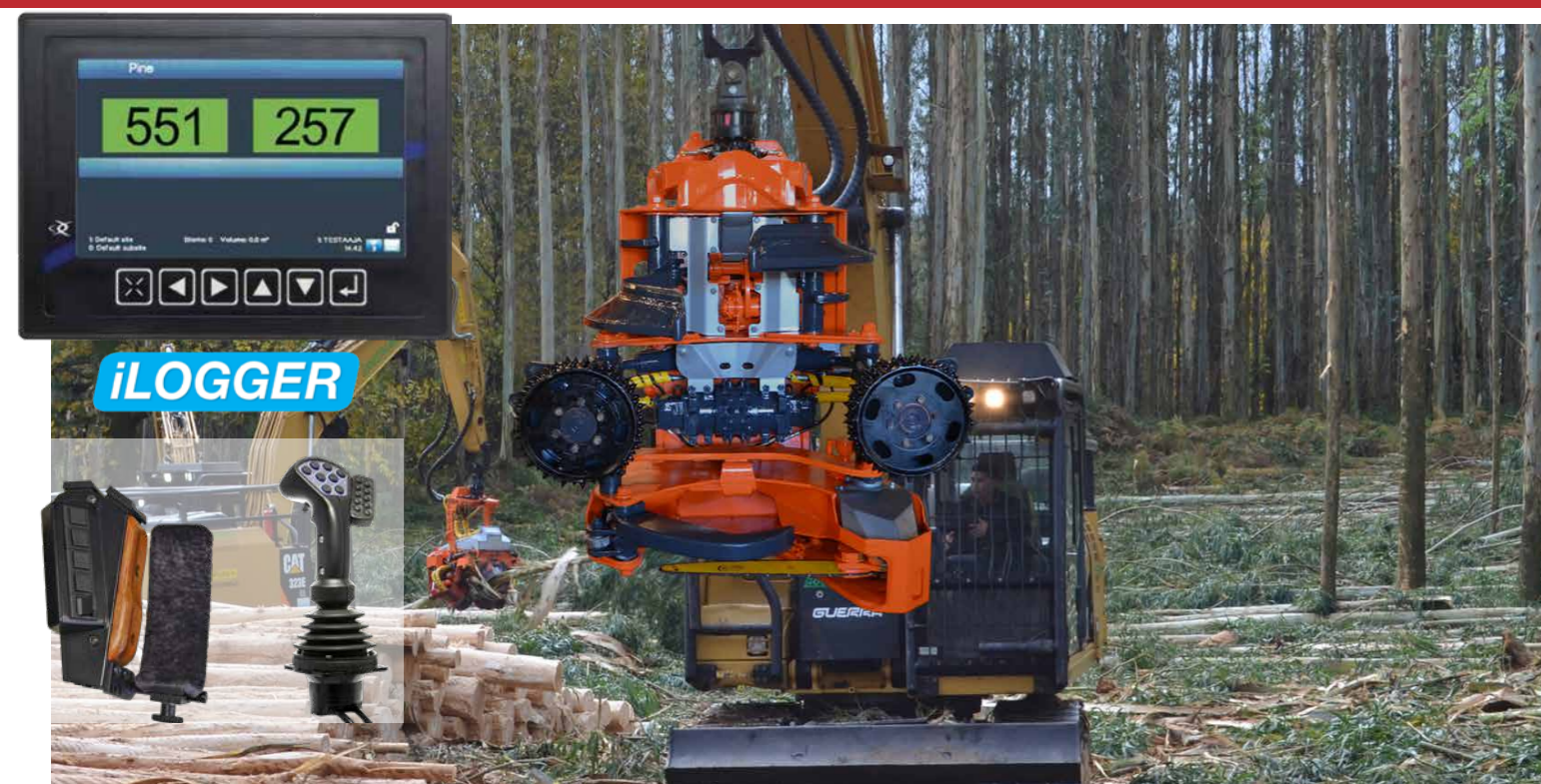


OPTIONAL CONTROL SYSTEM



Touchscreen

xLOGGER



iLOGGER

