

**GUERRA**

257A



Tel.: +34 986 58 20 00  
Fax: +34 986 58 22 91



Avda. Benigno Sánchez s/n  
36590 VILA DE CRUCES  
(Pontevedra) - Spain



[www.iguerra.com](http://www.iguerra.com)  
[info@iguerra.com](mailto:info@iguerra.com)



Capture to contact



In favour of improving our products, INDUSTRIAS GUERRA reserves the right to make whatever modifications it considers appropriate without prior notice.  
ED:022024



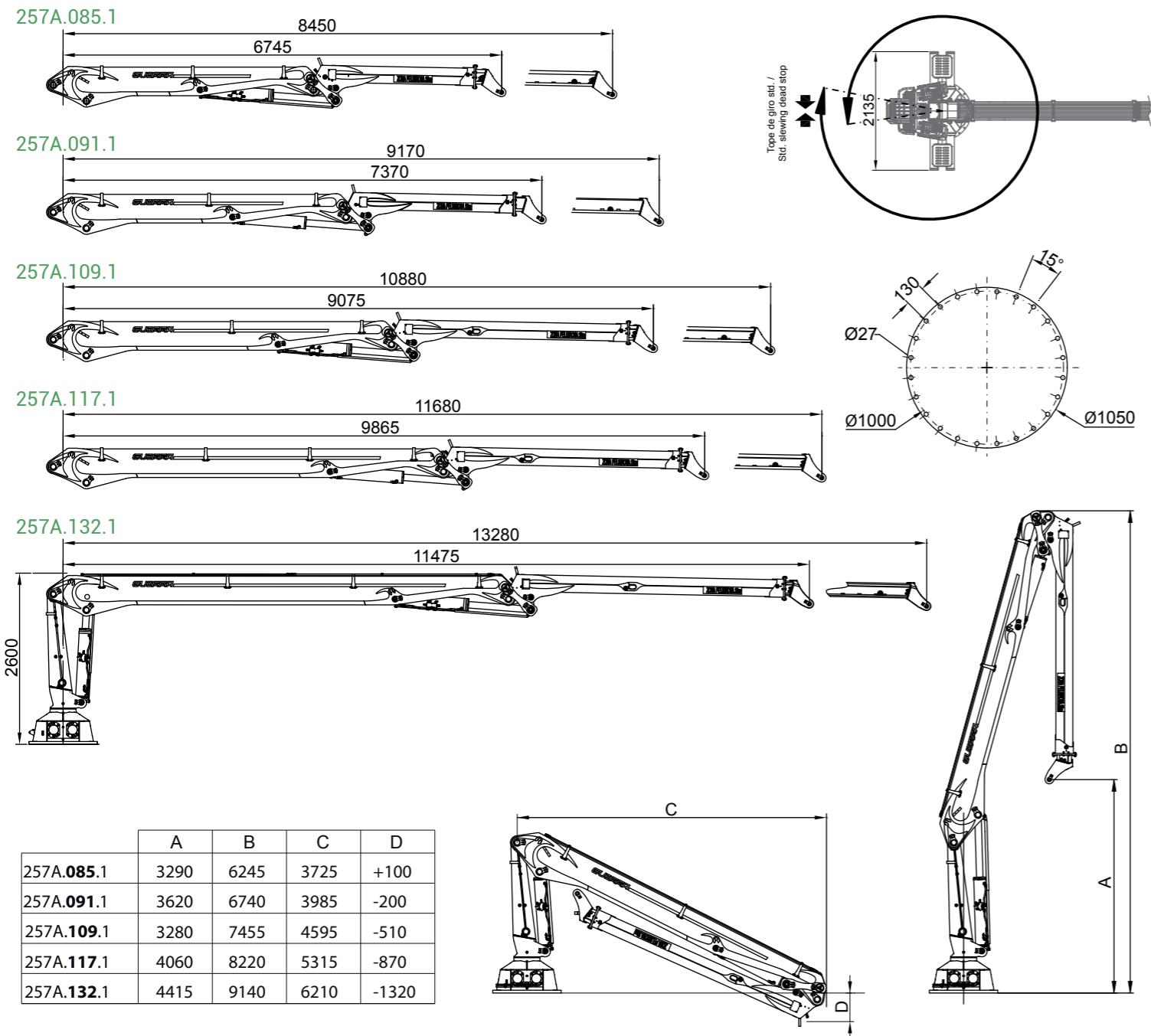
Hydraulic cranes

**FORESTRY**

# 257A



## DIMENSIONS



## TECHNICAL DATA

257A.086.1 257A.091.1 257A.109.1 257A.117.1 257A.132.1

	MAXIMUM LIFTING CAPACITY	[kNm]	230.6	222.2	209.0	186.0	176.7
	MAXIMUM HYDRAULIC OUTREACH	[m]	8.45	9.1	10.8	11.7	13.15
	GROSS SLEWING TORQUE	[kNm]			37.5		
	SLEWING ANGLE	[°]			400		
	MAXIMUM WORKING PRESSURE	[bar]			270		
	MAXIMUM OIL FLOW	[l/min]			2x80		
	CRANE WEIGHT (with cab and hydr. giratory outriggers) [Kg]		3000	3050	3075	3310	3350

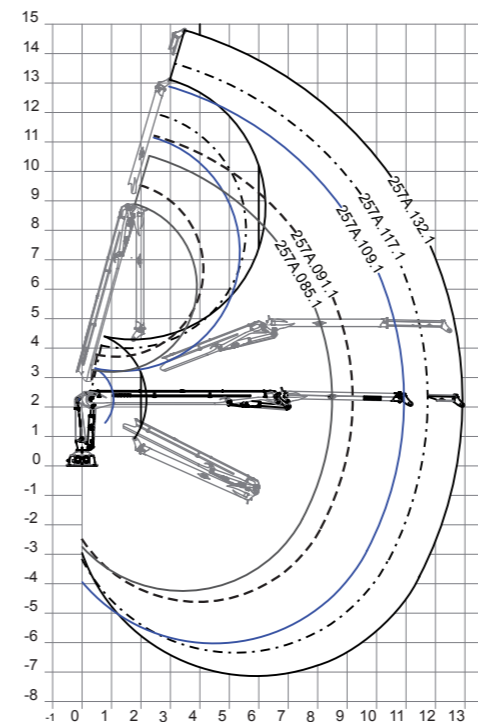
## DATA

- ✓ Built according "EN 12999" rule HC1-HB4-S4 class.
- ✓ 4 slewing cylinders and double rack.
- ✓ Wheel-rack slewing system, in oil bath with axial bearing.
- ✓ Shotpeened structure, primer of two components and two painting layers.
- ✓ Pre- installation of 4- function point accesory contro.

## OPTIONAL

- ✓ Control valve with fixed or variable flow.
- ✓ Electrical controls with joysticks.
- ✓ Heat exchanger.
- ✓ Set of headlights.
- ✓ Cab.

## POSITIONS DIAGRAM



## LOAD DIAGRAM

