

**GUERRA**

**MR230.45A**



Tel.: +34 986 58 20 00  
Fax: +34 986 58 22 91



Avda. Benigno Sánchez s/n  
36590 VILA DE CRUCES  
(Pontevedra) - Spain



[www.iguerra.com](http://www.iguerra.com)  
[info@iguerra.com](mailto:info@iguerra.com)



Capture to contact



In favour of improving our products, INDUSTRIAS GUERRA reserves the right to make whatever modifications it considers appropriate without prior notice.  
ED:042024



Hydraulic cranes

**MARINE**

# MR230.45A



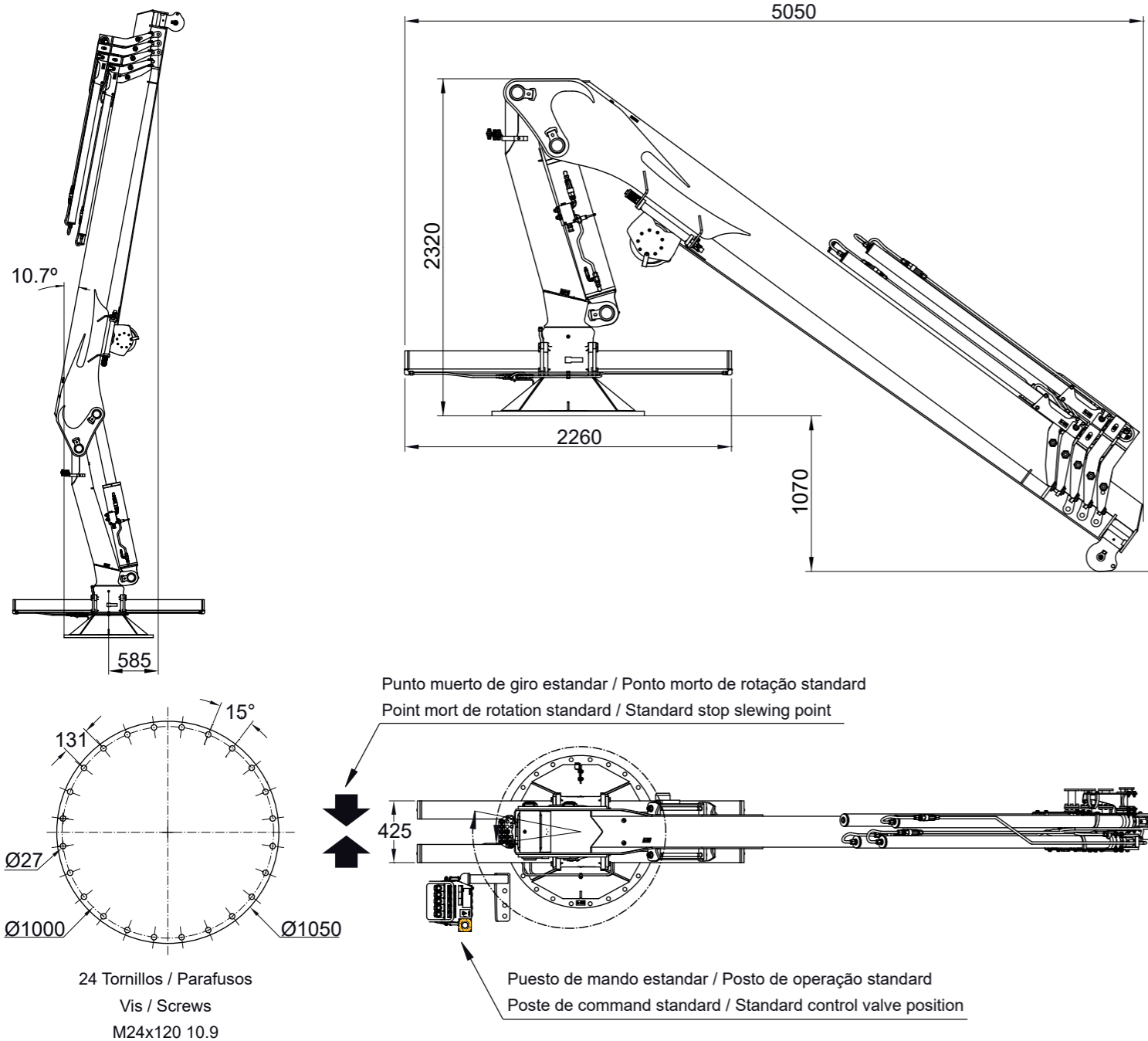
MR230.45A1 MR230.45A2 MR230.45A3 MR230.45A4 MR230.45A5

## TECHNICAL DATA

	MAXIMUM LIFTING CAPACITY	[kNm]	213.6	208.4	203.1	198.1	193.5
	MAXIMUM HYDRAULIC OUTREACH	[m]	6.1	8.0	9.9	11.8	13.7
	GROSS SLEWING TORQUE	[kNm]	41.8	41.8	41.8	41.8	41.8
	SLEWING ANGLE	[°]	398	398	398	398	398
	MAXIMUM WORKING PRESSURE	[bar]	230	230	230	230	230
	MAXIMUM OIL FLOW	[l/min]	45	45	45	45	45
	MASS OF STANDARD CRANE	[Kg]	1980	2155	2325	2485	2625

ED:042024

## DIMENSIONS



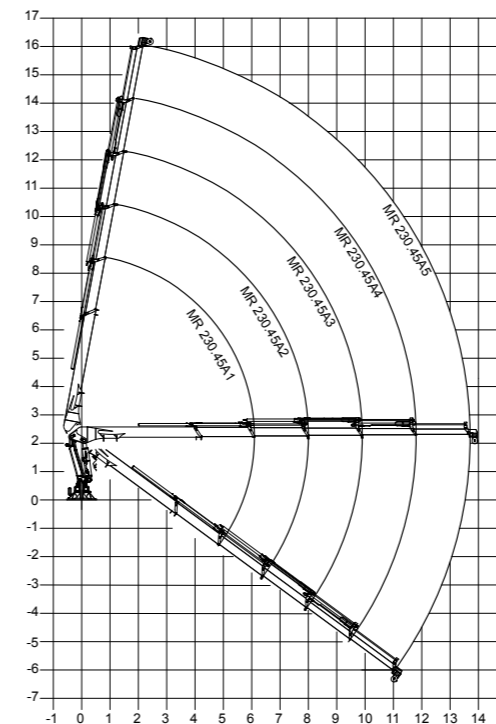
## DATA

- ✓ Built according DIN 15018 H1-B3
- ✓ The structure of the crane is grit blasted and metallized
- ✓ Double coat of priming and two layers of painting
- ✓ Special cylinders with Ni-Cr piston rods for marine environments
- ✓ Hose fittings and Pipes of hydraulic installation in stainless steel
- ✓ Hoses with rubber "type A" double coat
- ✓ Wheel-rack slewing system, via cylinders, with bronze bushings
- ✓ Safety valves on the cylinders
- ✓ Hydraulic load limiter and Emergency stop button.

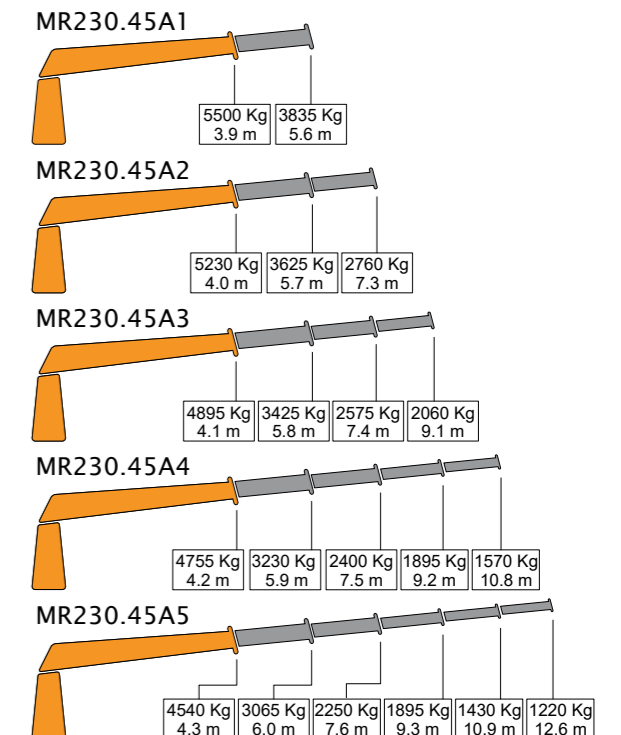
## + OPTIONAL

- ✓ Hydraulic winch.
- ✓ Remote control.
- ✓ Auxiliary hydraulic intakes.
- ✓ Cab.
- ✓ Electric, diesel or gasoline HPU

## POSITIONS DIAGRAM



## LOAD DIAGRAM



Only for use with hook - sea state 0 or harbour condition. For other uses or conditions, contact us.\* When operating with winch, loads must be reduced by the weight of installed winch