

GUERRA

MR550.45A



Tel.: +34 986 58 20 00
Fax: +34 986 58 22 91



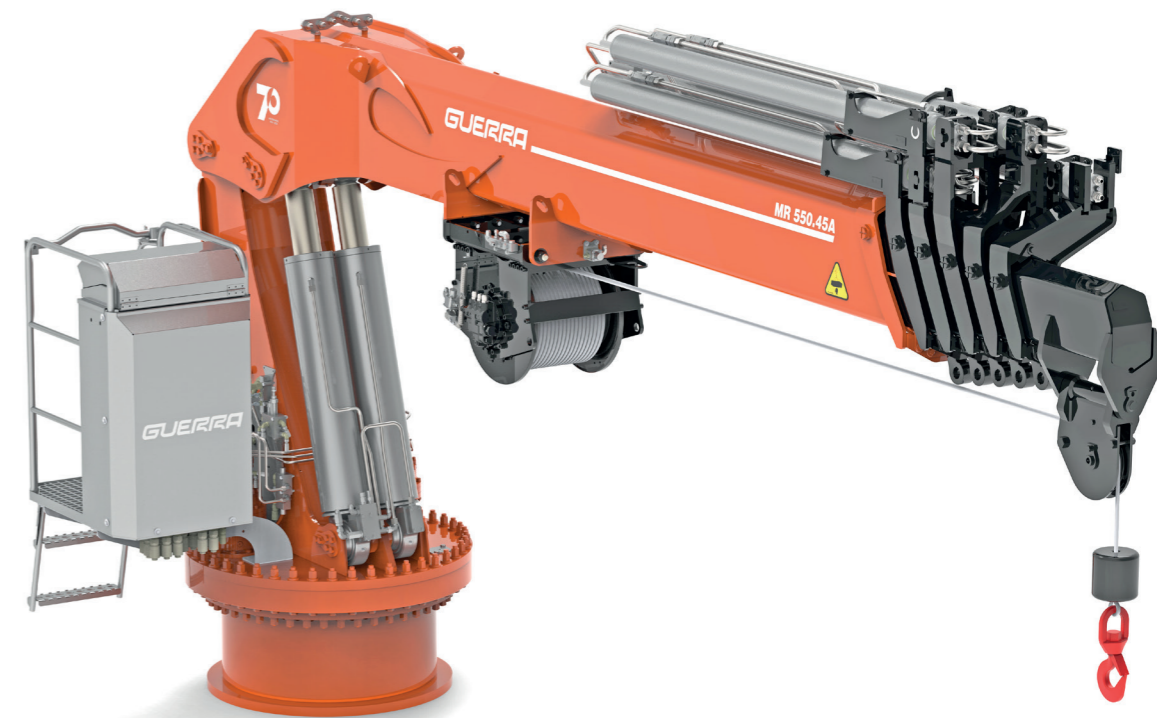
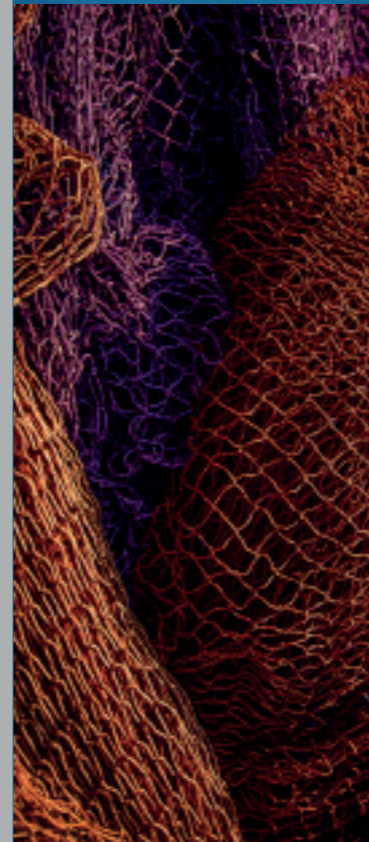
Avda. Benigno Sánchez s/n
36590 VILA DE CRUCES
(Pontevedra) - Spain



www.iguerra.com
info@iguerra.com



Capture to contact



In favour of improving our products, INDUSTRIAS GUERRA reserves the right to make whatever modifications it considers appropriate without prior notice.
ED:062024



Hydraulic cranes

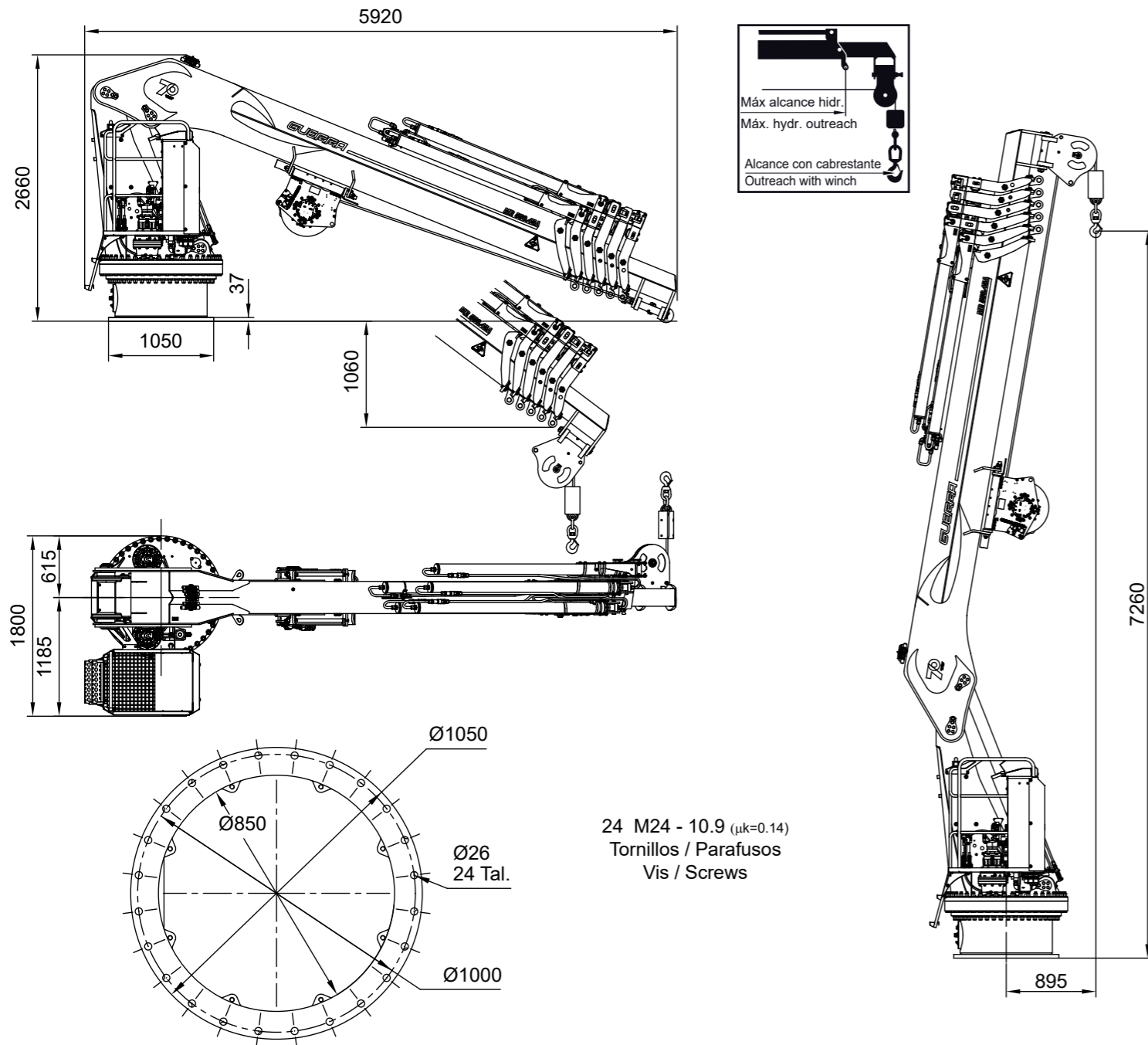
MARINE

MR550.45A



ED:062024

DIMENSIONS



TECHNICAL DATA

MR550.45A1 MR550.45A2 MR550.45A3 MR550.45A4 MR550.45A5

	MAXIMUM LIFTING CAPACITY	[kNm]	530.3	520.9	512.1	503.6	495.6
	MAXIMUM HYDRAULIC OUTREACH	[m]	6.3	8.2	10.1	12.0	13.9
	GROSS SLEWING TORQUE	[kNm]	71.5				
	SLEWING ANGLE	[°]	Unlimited				
	MAXIMUM WORKING PRESSURE	[bar]	260				
	MAXIMUM OIL FLOW	[l/min]	100/140				
	MASS OF STANDARD CRANE	[Kg]	3830	4150	4440	4710	4960

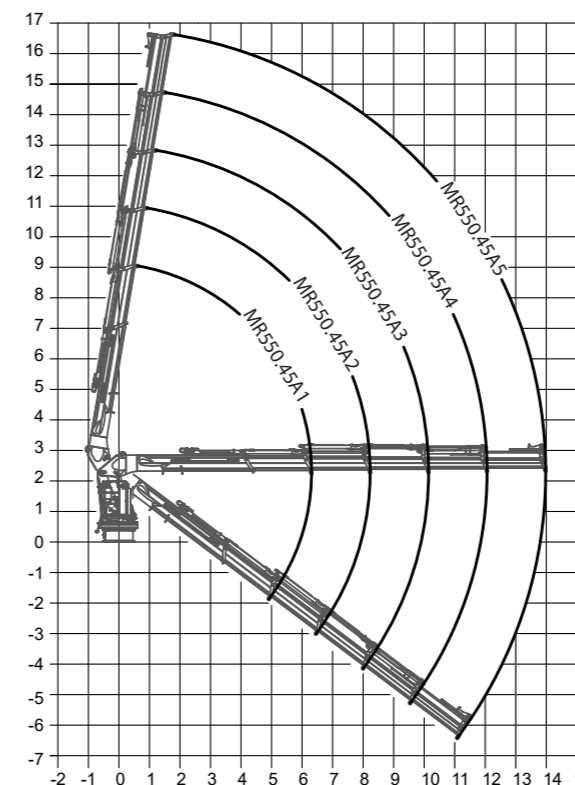
DATA

- ✓ Built according UNE-EN 13001-2 - HC2/HD4-S2.
- ✓ Main crane structures are sandblasted and metallized.
- ✓ Marine quality hydraulic cylinders with Ni-Cr coated piston rods.
- ✓ Hose connectors and hydraulic pipes of stainless steel material.
- ✓ High quality slew bearing and gears.
- ✓ One cylinder for each telescopic extension.

OPTIONAL

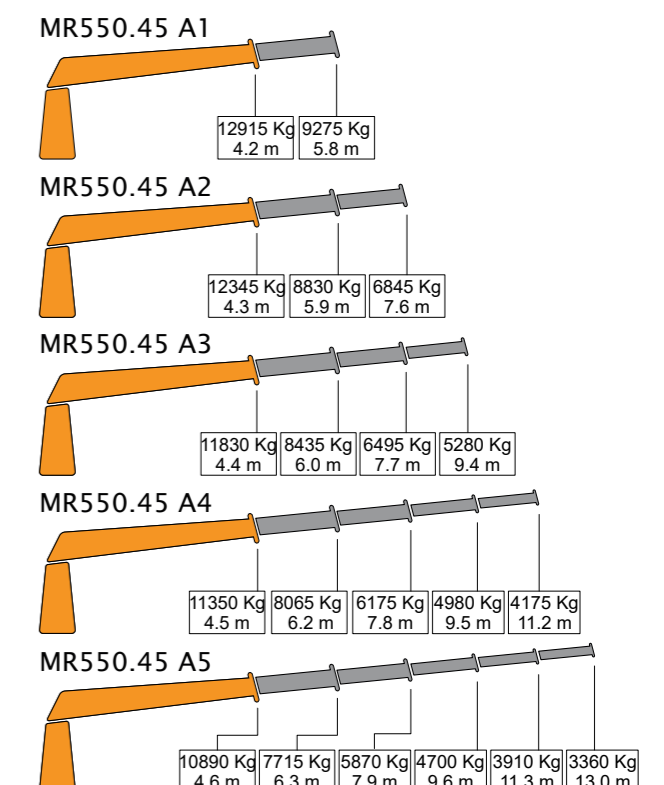
- ✓ Hydraulic winch.
- ✓ Radio remote control.
- ✓ Metallized cylinders.
- ✓ Metallized telescopic boom ends.
- ✓ Hose guards.
- ✓ Stainless steel manifolds and connectors.

POSITIONS DIAGRAM



LOAD DIAGRAM (CRANE HOOK)

* Only for use with crane hook, SS0 or Harbour Conditions.



* For other uses or conditions, contact us. * When operating with winch, loads must be reduced by the weight of installed winch