

**GUERRA**

**MR80.45A**



Tel.: +34 986 58 20 00  
Fax: +34 986 58 22 91



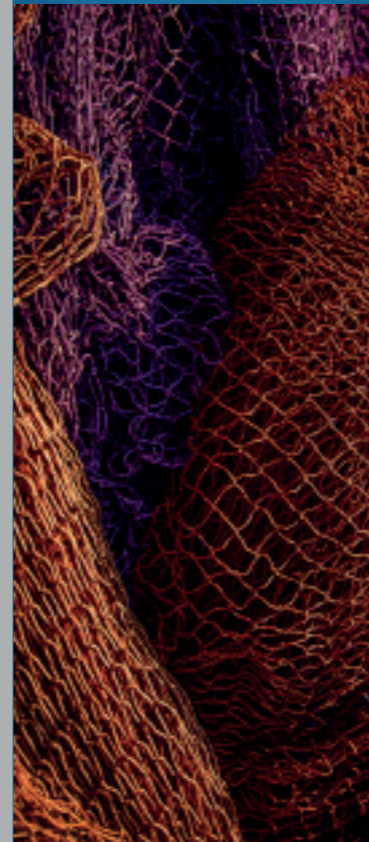
Avda. Benigno Sánchez s/n  
36590 VILA DE CRUCES  
(Pontevedra) - Spain



[www.iguerra.com](http://www.iguerra.com)  
[info@iguerra.com](mailto:info@iguerra.com)



Capture to contact



In favour of improving our products, INDUSTRIAS GUERRA reserves the right to make whatever modifications it considers appropriate without prior notice.  
ED:092024



Hydraulic cranes

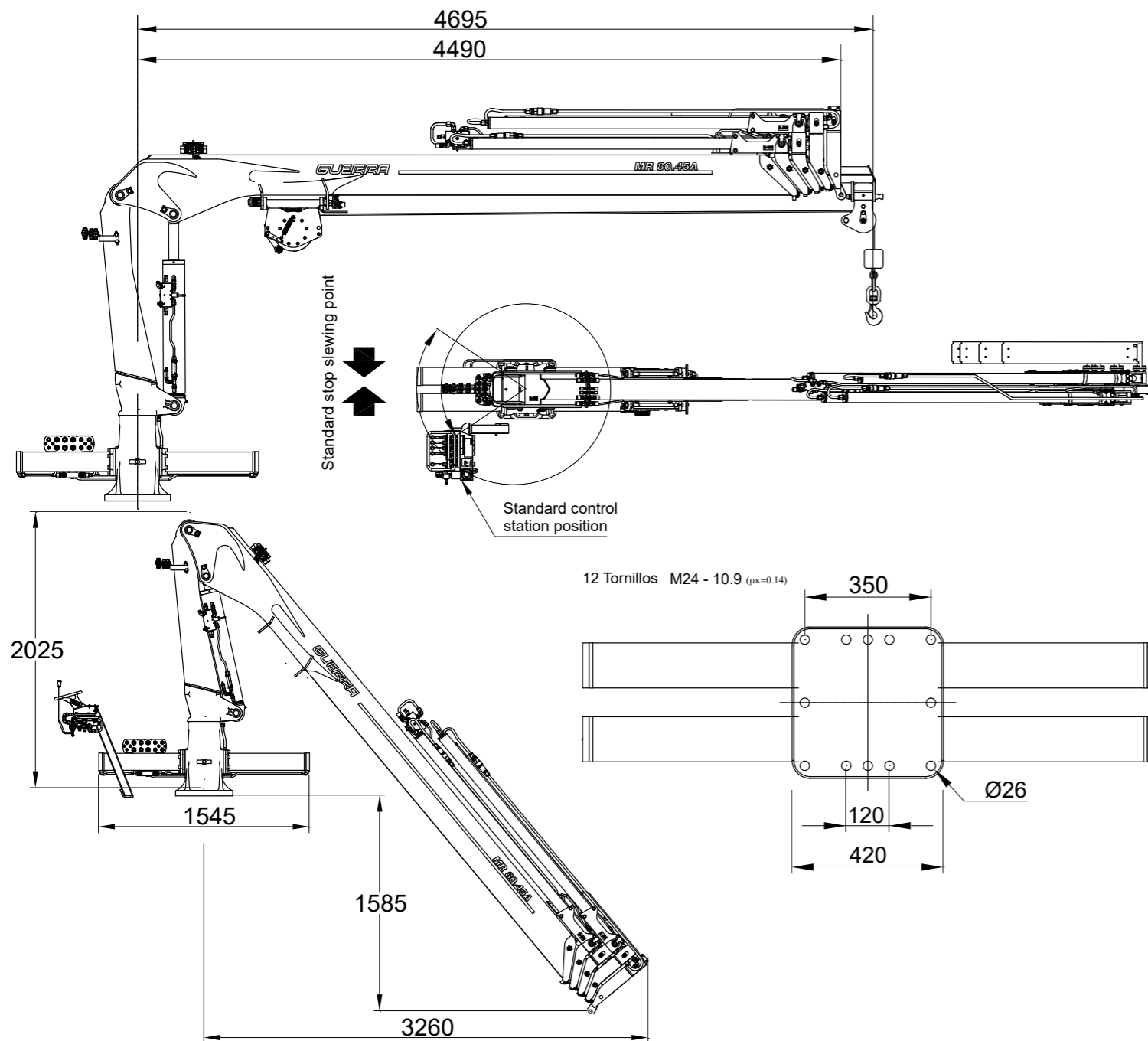
**MARINE**

# MR80.45A



ED:092024

## DIMENSIONS



## TECHNICAL DATA

		MR80.45A1	MR80.45A2	MR80.45A3	MR80.45A4	
	MAXIMUM LIFTING CAPACITY	[kNm]	75.6	72.3	69.0	66.0
	MAXIMUM HYDRAULIC OUTREACH	[m]	6.0	7.9	9.8	11.6
	GROSS SLEWING TORQUE	[kNm]	20.35			
	SLEWING ANGLE	[°]	430			
	MAXIMUM WORKING PRESSURE	[bar]	228			
	MAXIMUM OIL FLOW	[l/min]	30			
	MASS OF STANDARD CRANE	[kg]	940	1050	1155	1245

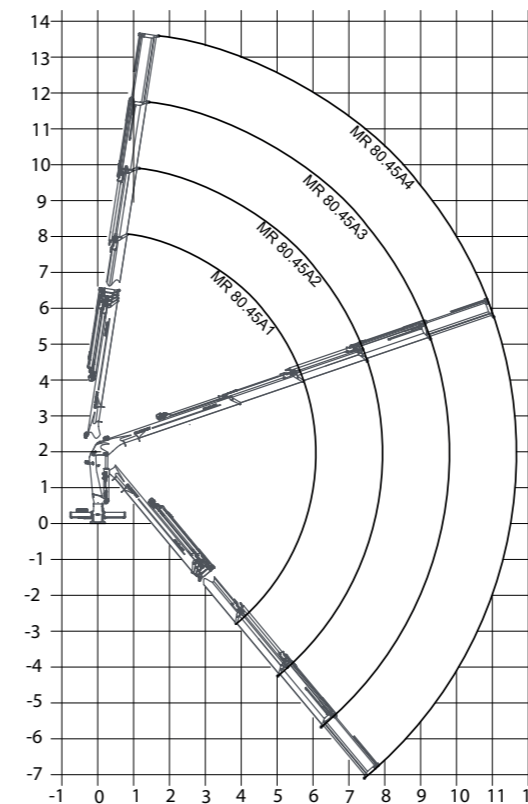
## DATA

- ✓ Built according UNE-EN 13001-2 - HC2/HD4-S2.
- ✓ Main crane structures are sandblasted and metallized.
- ✓ Double coat of priming and two layers of painting.
- ✓ Marine quality hydraulic cylinders with Ni-Cr coated piston rods.
- ✓ Hose connectors and hydraulic pipes of stainless steel material.
- ✓ Wheel-rack slewing system, via cylinders, with bronze bushings.
- ✓ Safety valves on the cylinders.
- ✓ Hydraulic load limiter and Emergency stop button.

## OPTIONAL

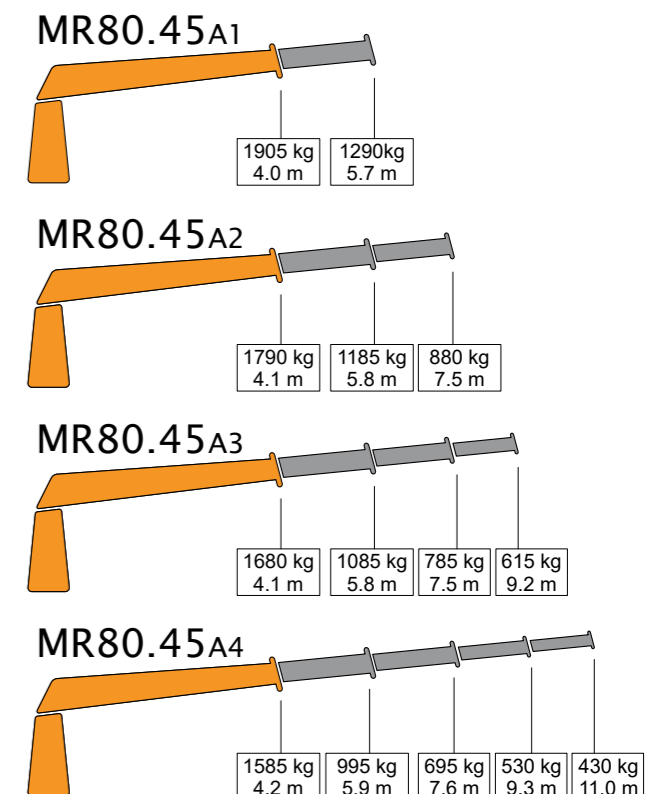
- ✓ Hydraulic winch.
- ✓ Remote control.
- ✓ Auxiliary hydraulic intakes.
- ✓ Cab.
- ✓ Electric, diesel or gasoline HPU

## POSITIONS DIAGRAM



## LOAD DIAGRAM (CRANE HOOK)

\* Only for use with crane hook, SS0 or Harbour Conditions.



\* For other uses or conditions, contact us. \* When operating with winch, loads must be reduced by the weight of installed winch