

GUERRA

MR155.45A



Tel.: +34 986 58 20 00
Fax: +34 986 58 22 91



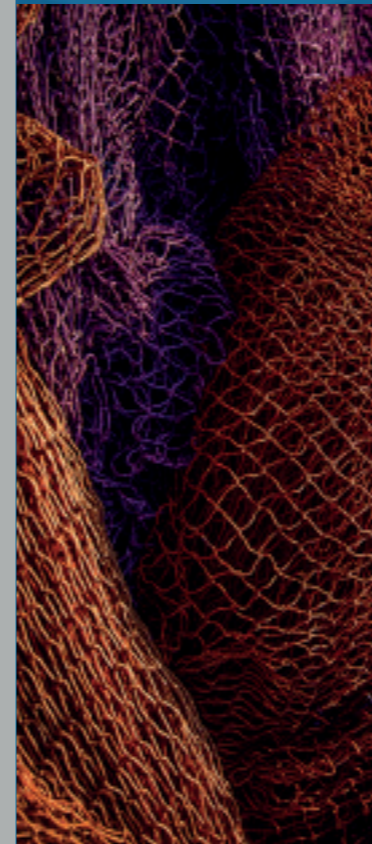
Avda. Benigno Sánchez s/n
36590 VILA DE CRUCES
(Pontevedra) - Spain



www.iguerra.com
info@iguerra.com



Capture to contact



In favour of improving our products, INDUSTRIAS GUERRA reserves the right to make whatever modifications it considers appropriate without prior notice.
ED:032025



Hydraulic cranes

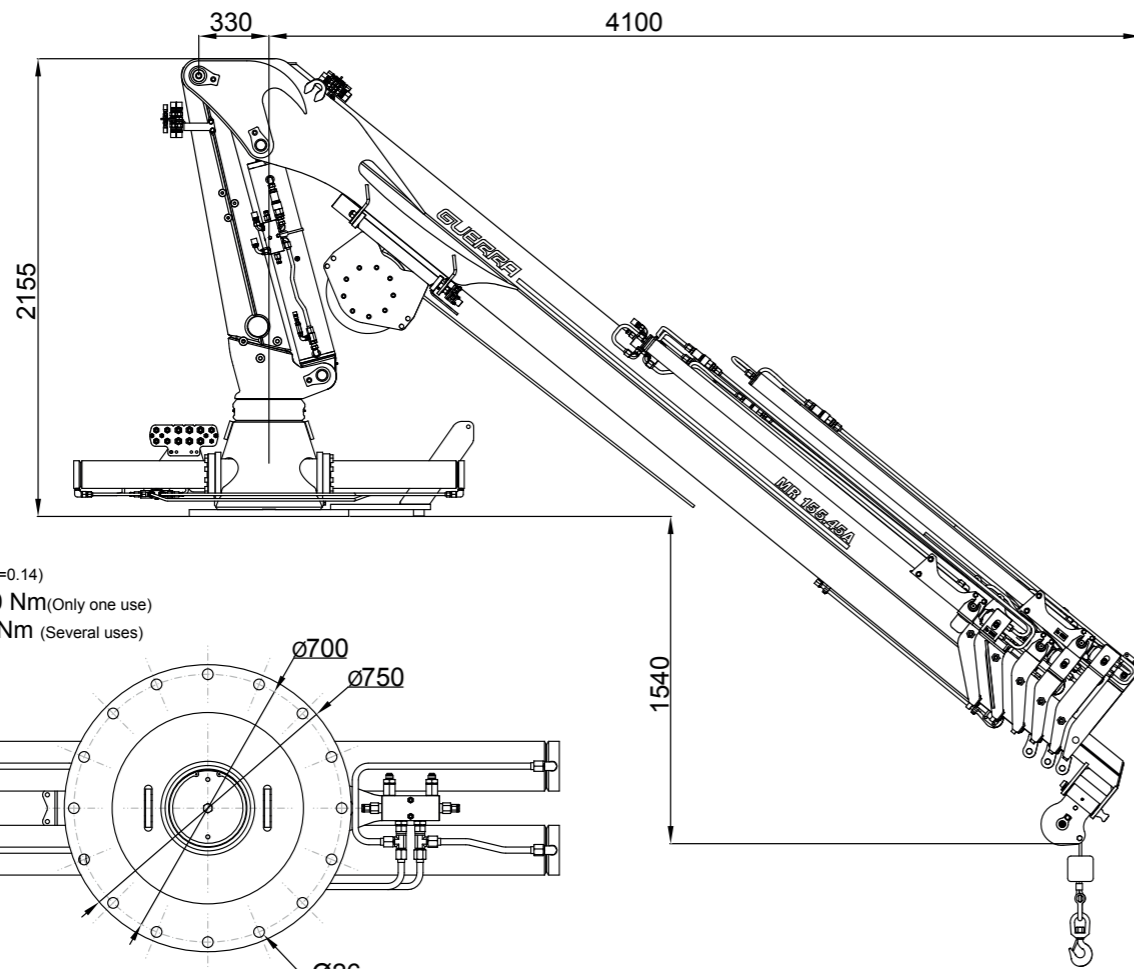
MARINE

MR155.45A

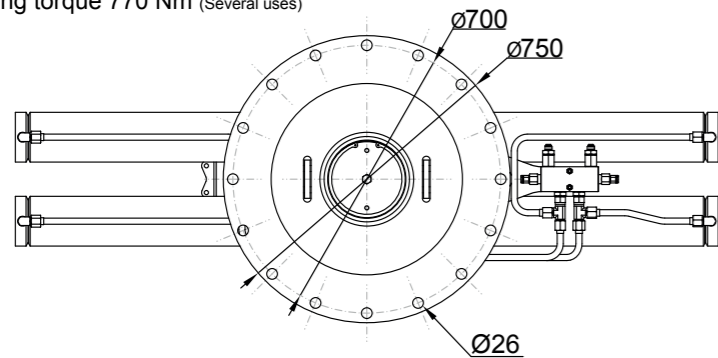


ED:032025

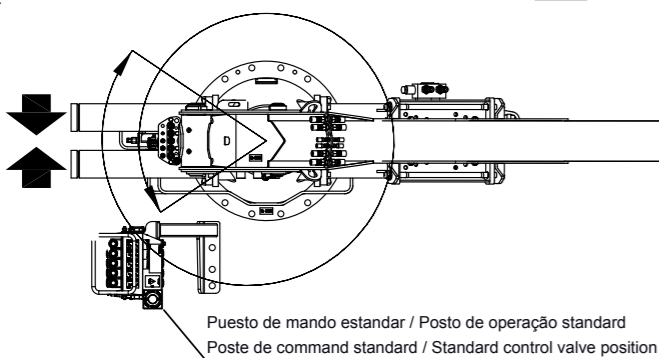
DIMENSIONS



16 Bolts M24 - 10.9 ($\mu_k=0.14$)
Tightening torque 1000 Nm (Only one use)
Tightening torque 770 Nm (Several uses)



Punto muerto de giro estándar / Ponto morto de rotação standard
Point mort de rotation standard / Standard stop slewing point



TECHNICAL DATA

MR155.45A1 MR155.45A2 MR155.45A3 MR155.45A4 MR155.45A5

	MAXIMUM LIFTING CAPACITY	[kNm]	151.4	146.3	141.4	136.5	132.3
	MAXIMUM HYDRAULIC OUTREACH	[m]	6.3	8.2	10.0	11.9	13.8
	GROSS SLEWING TORQUE	[kNm]	20				
	SLEWING ANGLE	[°]	430				
	MAXIMUM WORKING PRESSURE	[bar]	240				
	MAXIMUM OIL FLOW	[l/min]	45				
	MASS OF STANDARD CRANE	[kg]	1800	1950	2095	2230	2350

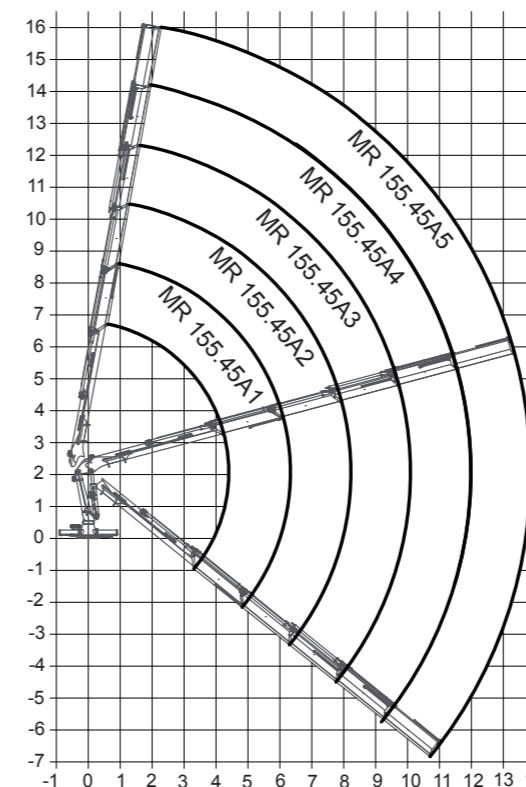
DATA

- ✓ Built according UNE-EN 13001-2 - HC2/HD4-S2.
- ✓ Main crane structures are sandblasted and metallized.
- ✓ Double coat of priming and two layers of painting.
- ✓ Marine quality hydraulic cylinders with Ni-Cr coated piston rods.
- ✓ Hose connectors and hydraulic pipes of stainless steel material.
- ✓ Wheel-rack slewing system, via cylinders, with bronze bushings.
- ✓ Safety valves on the cylinders.
- ✓ Hydraulic load limiter and Emergency stop button.

OPTIONAL

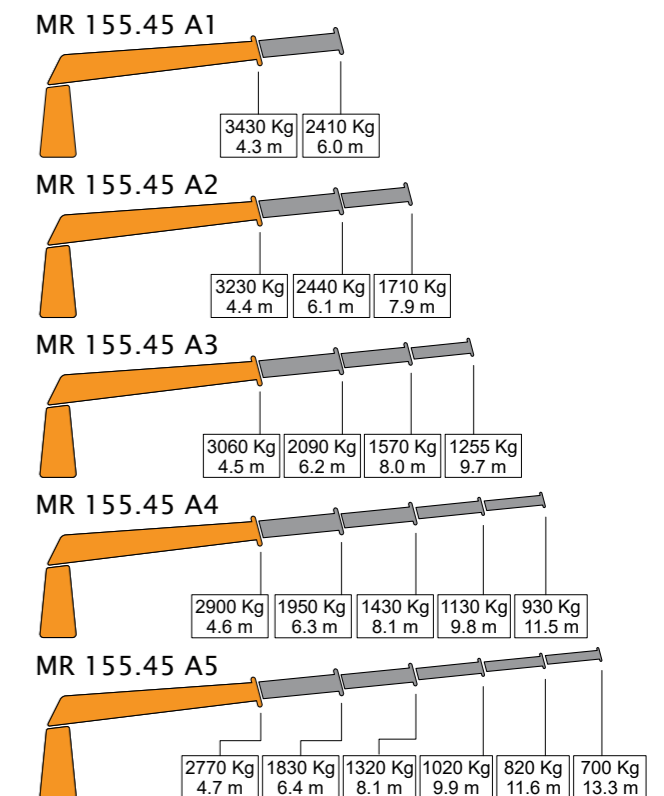
- ✓ Hydraulic winch.
- ✓ Remote control.
- ✓ Auxiliary hydraulic intakes.
- ✓ Cab.
- ✓ Electric, diesel or gasoline HPU

POSITIONS DIAGRAM



LOAD DIAGRAM (CRANE HOOK)

* Only for use with crane hook, SS0 or Harbour Conditions.



* For other uses or conditions, contact us. * When operating with winch, loads must be reduced by the weight of installed winch